

Slough Insights

About this pack...

This pack has been created to provide some insights on Slough, our residents and the borough's economy. It draws upon new data from the 2021 Census, as well as other key sources of information.

It is intended to be viewed as a first point of reference, to provide high-level insights on key challenges and key strengths for the town, and is designed as a tool to support the council in the development of our strategies and in making evidence-based decisions.

This pack should be used alongside other key sources of information, such as the Joint Strategic Needs Assessment (JSNA), equalities data, resident consultations and other service-level sources of data.

In order to save room – data sources and definitions are in the 'notes section' of the slides, and links to our data sources can be found on the final slide.

Headlines

- Slough has a diverse, young population.
- Slough has pockets of severe deprivation.
- Slough has high levels of overcrowding and the largest average household size in England and Wales.
- There has been a larger increase in economically inactive people than active people in Slough since 2011.
- Slough has a high proportion of children in low income families and pensioners in poverty in Berkshire.
- There is a gap in income of £84 per week between Slough residents and those who commute into Slough for work.
- There are high levels of crime, including violent crime.
- Slough has generally good levels of educational attainment but is below the national average for post-16 education and qualifications.

Contents (1)

Population slides 6-25	<ul style="list-style-type: none">• Population size• Population density• Age• Country of birth• Ethnicity• National identity	<ul style="list-style-type: none">• Language• Religion• Sexual orientation & gender identity• Deprivation	<ul style="list-style-type: none">• Health inequalities• General health & wellbeing• Disability• Unpaid care
Built & Natural Environment slides 28-35	<ul style="list-style-type: none">• Household size• Overcrowding• Tenure• Accommodation & affordability	<ul style="list-style-type: none">• Housing benefit, central heating & household car use	<ul style="list-style-type: none">• Environmental & housing deprivation measures• Green spaces & pollution
Work & Labour Market slides 36-44	<ul style="list-style-type: none">• Economic activity• Unemployment & job density• Industry	<ul style="list-style-type: none">• Occupation• Salaries• Vacancies	<ul style="list-style-type: none">• Skills
Vulnerability slides 45-51	<ul style="list-style-type: none">• Family income, fuel poverty & loneliness• Homelessness	<ul style="list-style-type: none">• Support• Vulnerable children	<ul style="list-style-type: none">• Adult needs (aged 18-64)• Adult needs (aged 65 and over)

Contents (2)

Income

slides 52-54

- Weekly earnings
- Income deprivation

Crime

slides 55-56

- Crime rates

Education

slides 57-65

- Early Years Foundation Stage (EYFS)
- Key Stage 2
- Key Stage 4
- Post-16
- Qualifications
- SEND
- EHC plans
- SEN support & EHC plan attainment

Population



Population - Residents & Households

Slough population: 158,500



Females
80,005
(50.5%)



Males
78,495
(49.5%)



52,423 Households

3 people per Household

Slough's population in the 2021 Census was 158,500. This is an increase of 13.0% from 2011, compared to increases of 7.5% in the South East and 6.6% in England. This growth is also larger than our neighbouring authorities:

- Buckinghamshire - 9.5%
- Hillingdon – 11.7%
- Spelthorne – 7.7%
- Windsor & Maidenhead – 6.2%

Slough is now the 127th largest local authority by total population size, up 13 places from 2011.

There are now 52,423 households in Slough containing at least one person – a growth of only 3.3% on 2011, compared to 6.1% in England and Wales.

Slough has a mean household size of 3 people per household. This is the largest mean household size in England and Wales. The mean for England and Wales is 2.4.



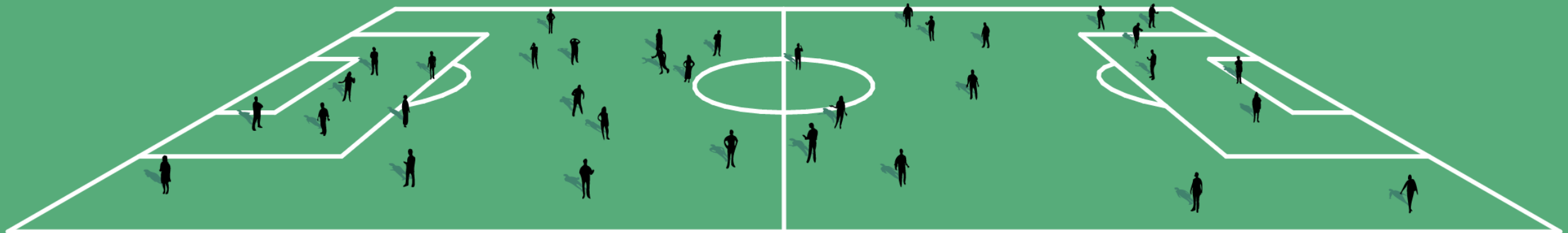
Population - Density

Slough is the third most densely populated LA in the South East, with 4,871 usual residents per square kilometre (48.7 per hectare compared to 45.8 in 2011, South East: 4.87, England: 4.34).

This is the equivalent of around 35 people living on each football pitch-sized area of land, compared to an average of just 3 across England.

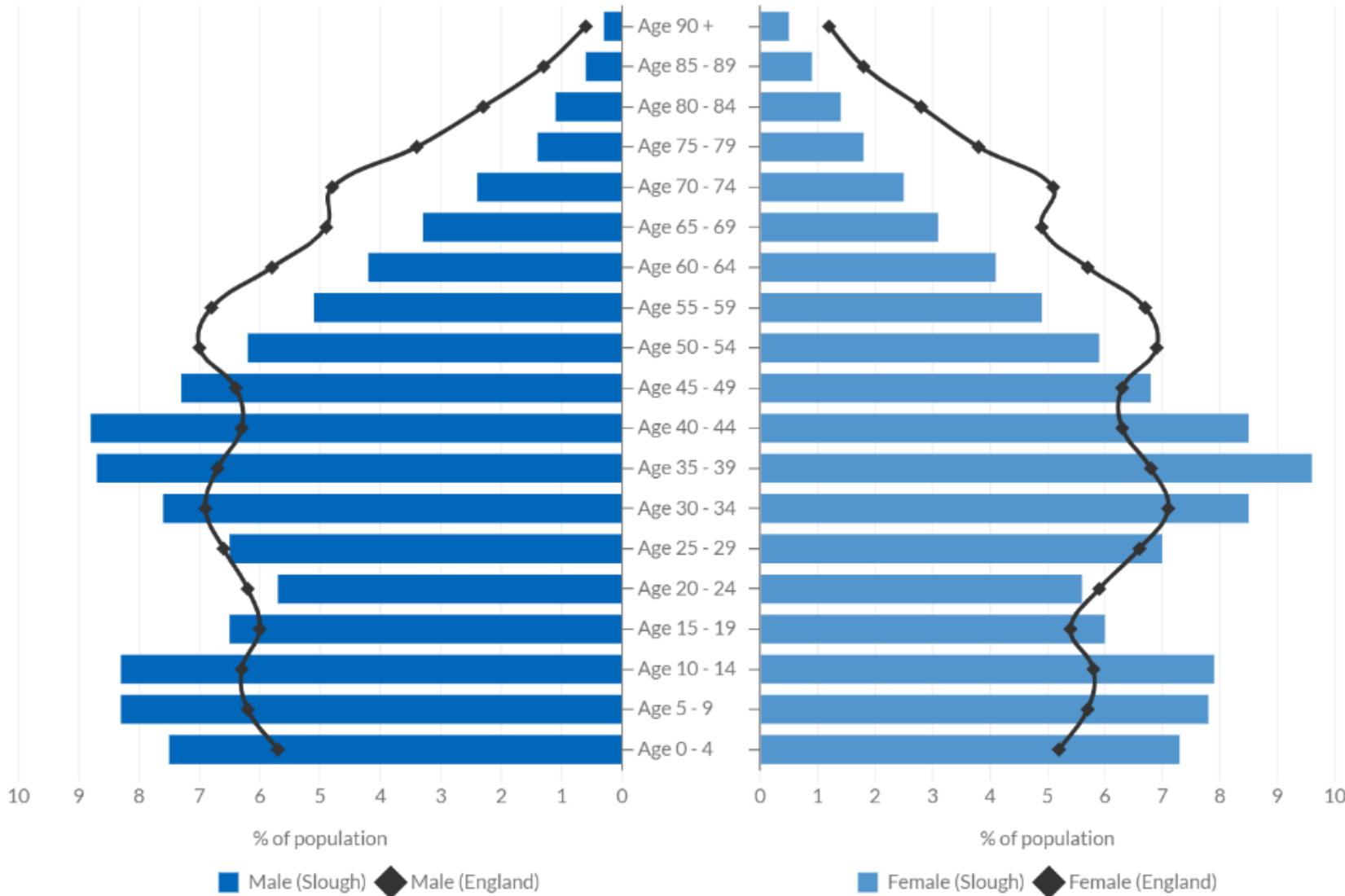
Slough is the fifth most densely populated Local Authority outside of London.

Slough has the third smallest population within Berkshire but is the most densely populated.





Population - Age



25% of Slough's residents are aged 0-15, 65.4% are aged 16-64, and 9.7% are aged 65 or over.

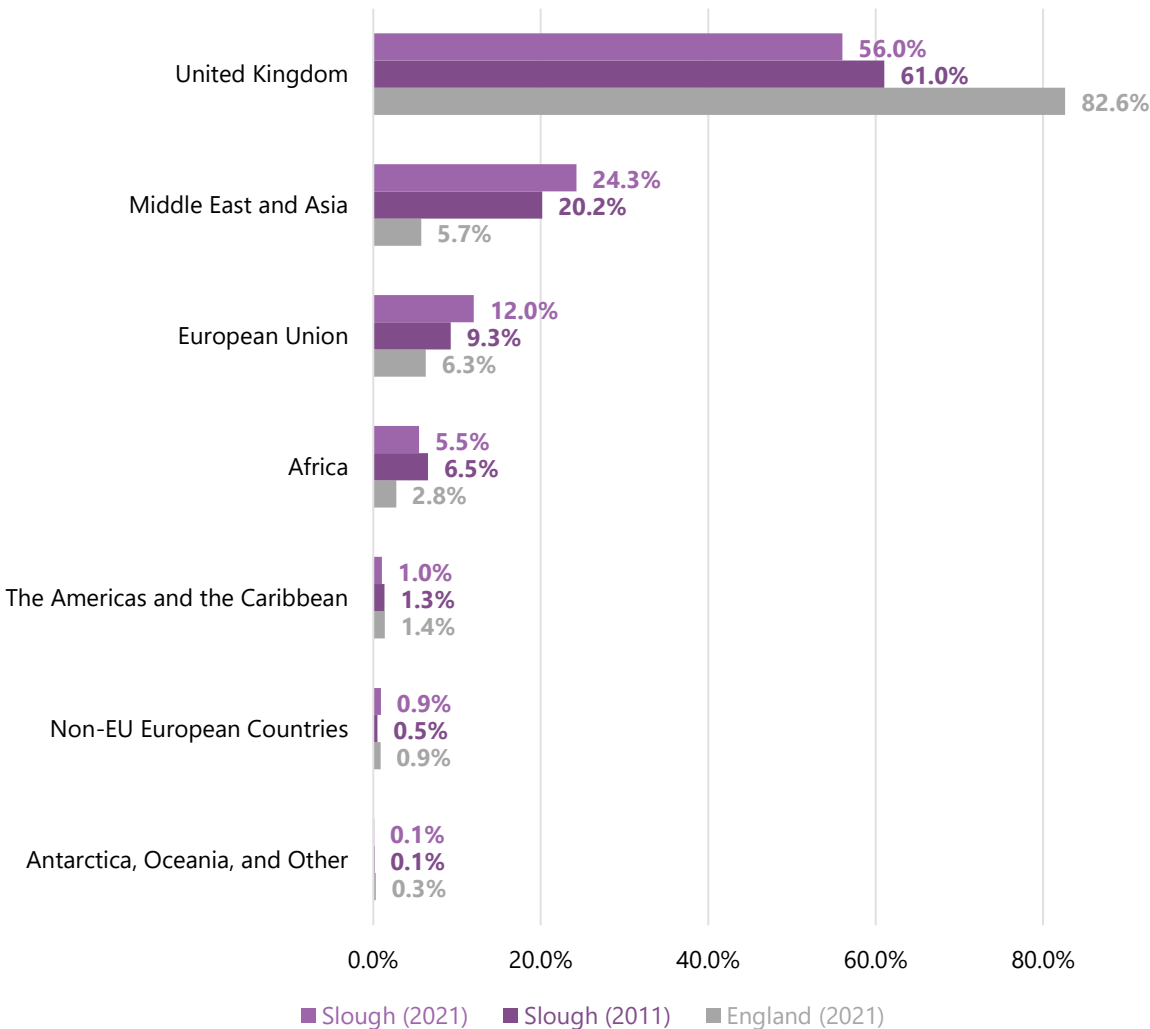
Slough's average age is 34, compared to 41 for the South East and 40 for England.

Slough has the second highest proportion of children aged 15 or under in England and Wales, behind only Barking and Dagenham.



Population – Country of Birth (Broad)

Broad Country of Birth



56% of Slough’s population were born in the UK, 24.3% were born in the Middle East and Asia, and 12.0% were born in the EU.

Broad Country of Birth: Number of Slough Residents	2021	2011	Change
United Kingdom	88,806	85,553	+4%
Middle East and Asia	38,461	28,304	+36%
European Union	19,042	12,996	+47%
Africa	8,662	9,179	-6%
The Americas and the Caribbean	1,633	1,886	-13%
Non-EU European Countries	1,454	728	+100%
Antarctica, Oceania, and Other	161	195	-17%



Population – Country of Birth (Detailed)

After England, the most selected countries of birth for residents in Slough were:

1. India
2. Pakistan
3. Poland
4. Romania
5. Kenya

10.5% of Slough's population arrived in the UK aged 0-15, 33.2% arrived aged 16-64, and 0.3% arrived aged 65 or over.

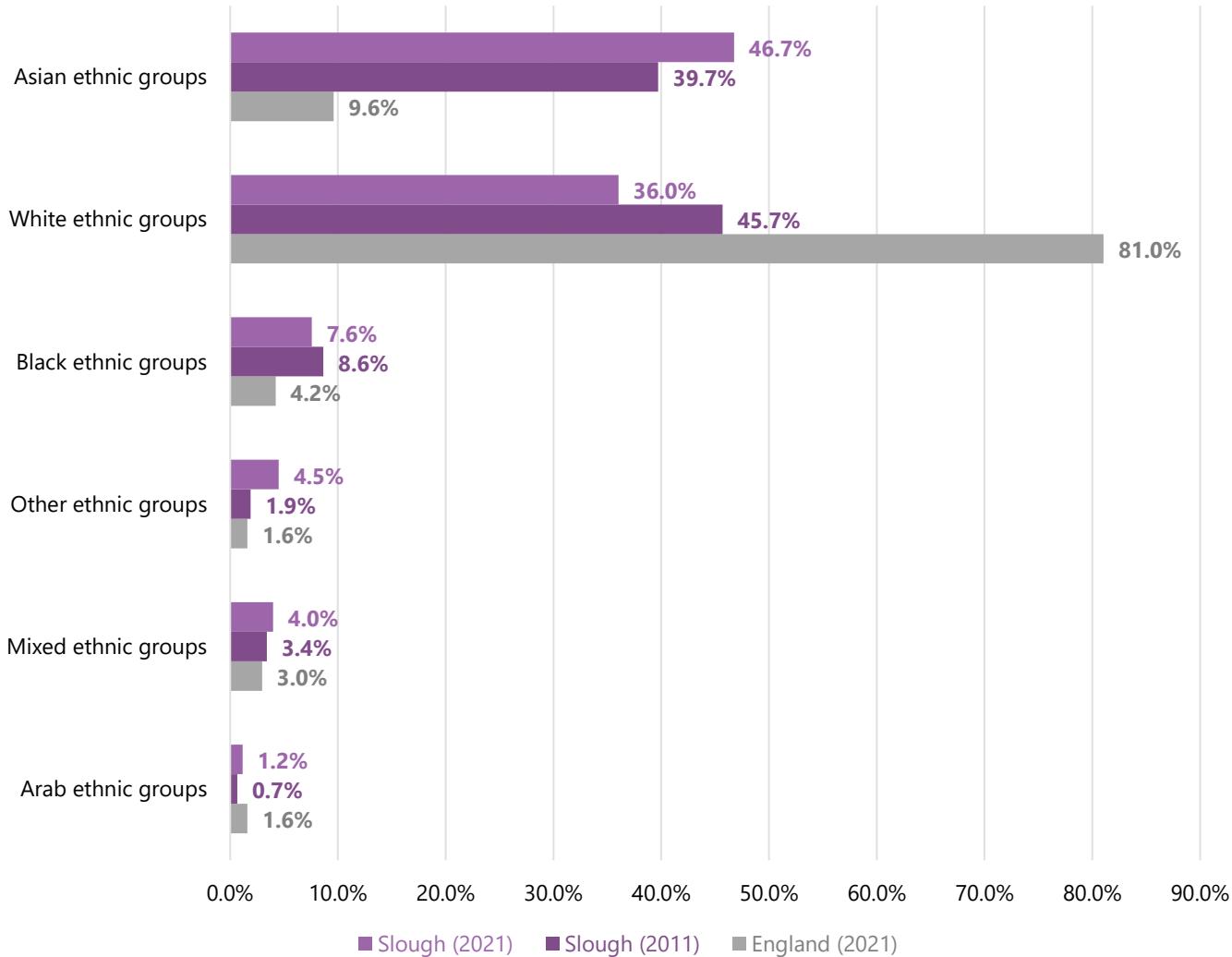
64.1% of the migrant population in Slough have resided in the UK for 10 or more years, 15.6% for 5-9 years, 11.3% for 2-4 years, and 9% for less than 2 years.

Broad Country of Birth (2021)	Detailed Country of Birth	Slough Number	Slough %
United Kingdom	England	87,350	55.1%
Middle East and Asia	India	17,107	10.8%
Middle East and Asia	Pakistan	14,418	9.1%
European Union	Poland	8,912	5.6%
European Union	Romania	3,551	2.2%
Africa	Kenya	1,940	1.2%
Middle East and Asia	Sri Lanka	1,385	0.9%
Non-EU Europe	Other Europe	1,384	0.9%
Africa	Somalia	1,336	0.8%
Africa	Other South and Eastern Africa	1,228	0.8%



Population – Ethnicity (1)

Broad Ethnic Groups



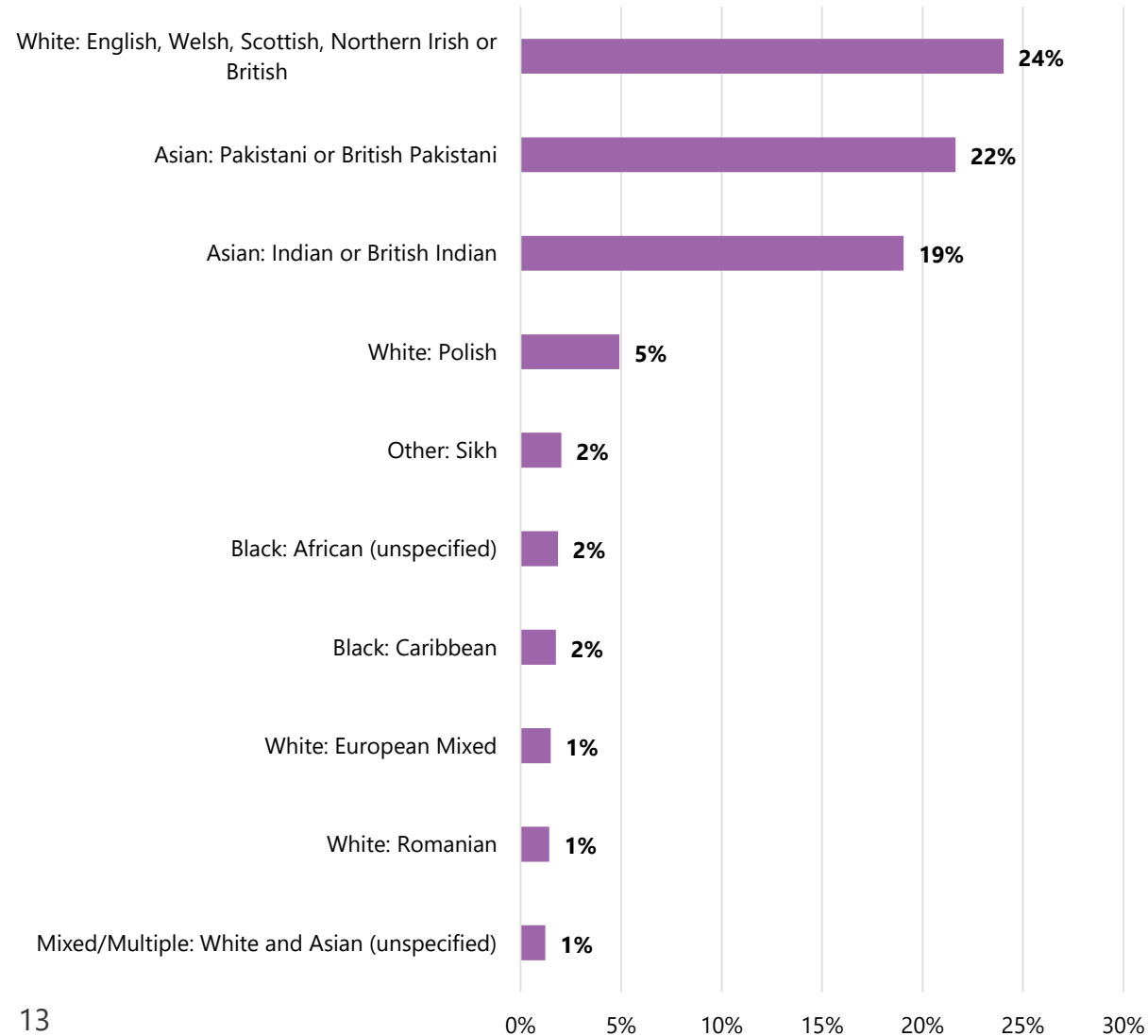
46.7% of Slough’s population are from Asian ethnic groups and 36.0% are from White ethnic groups.

Broad Ethnic Groups: Number of Slough Residents	2021	2011	Change
Asian ethnic groups	74,093	55,697	+33%
White ethnic groups	57,134	64,053	-11%
Black ethnic groups	11,992	12,115	-1%
Other ethnic groups	7,144	2,628	+172%
Mixed ethnic groups	6,311	4,758	+33%
Arab ethnic groups	1,826	954	+91%



Population – Ethnicity (2)

Ten Largest (Detailed) Ethnic Groups in Slough in 2021

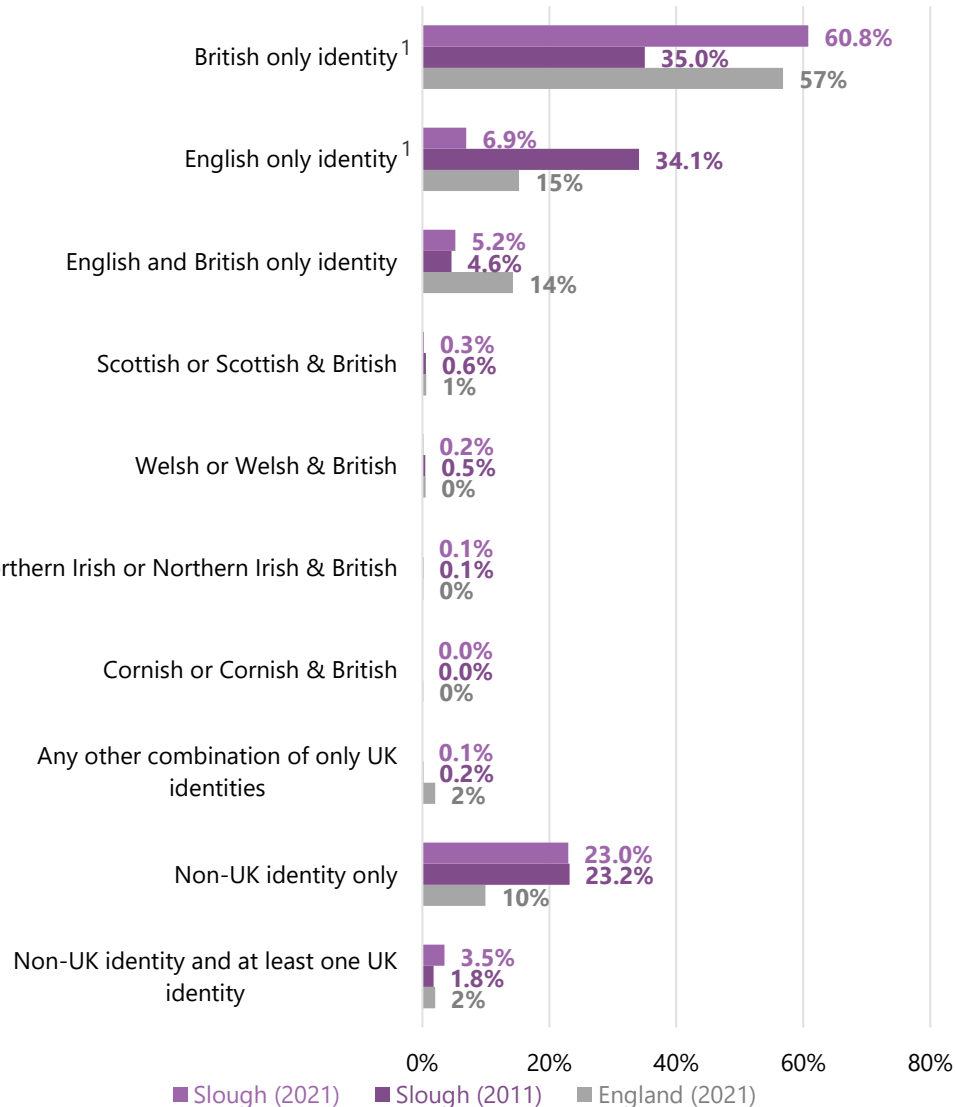


Ten Largest (Detailed) Ethnic Groups in Slough in 2021	No. Residents
White: English, Welsh, Scottish, Northern Irish or British	38,093
Asian, Asian British or Asian Welsh: Pakistani or British Pakistani	34,317
Asian, Asian British or Asian Welsh: Indian or British Indian	30,209
White: Polish	7,778
Other ethnic group: Sikh	3,200
Black, Black British, Black Welsh of African background: African unspecified	2,933
Black, Black British, Black Welsh or Caribbean background: Caribbean	2,769
White: European Mixed	2,363
White: Romanian	2,258
Mixed or Multiple ethnic groups: White and Asian (unspecified)	1,945



Population – National identity

National Identity



23% of Slough’s population identify as a non-UK identity only

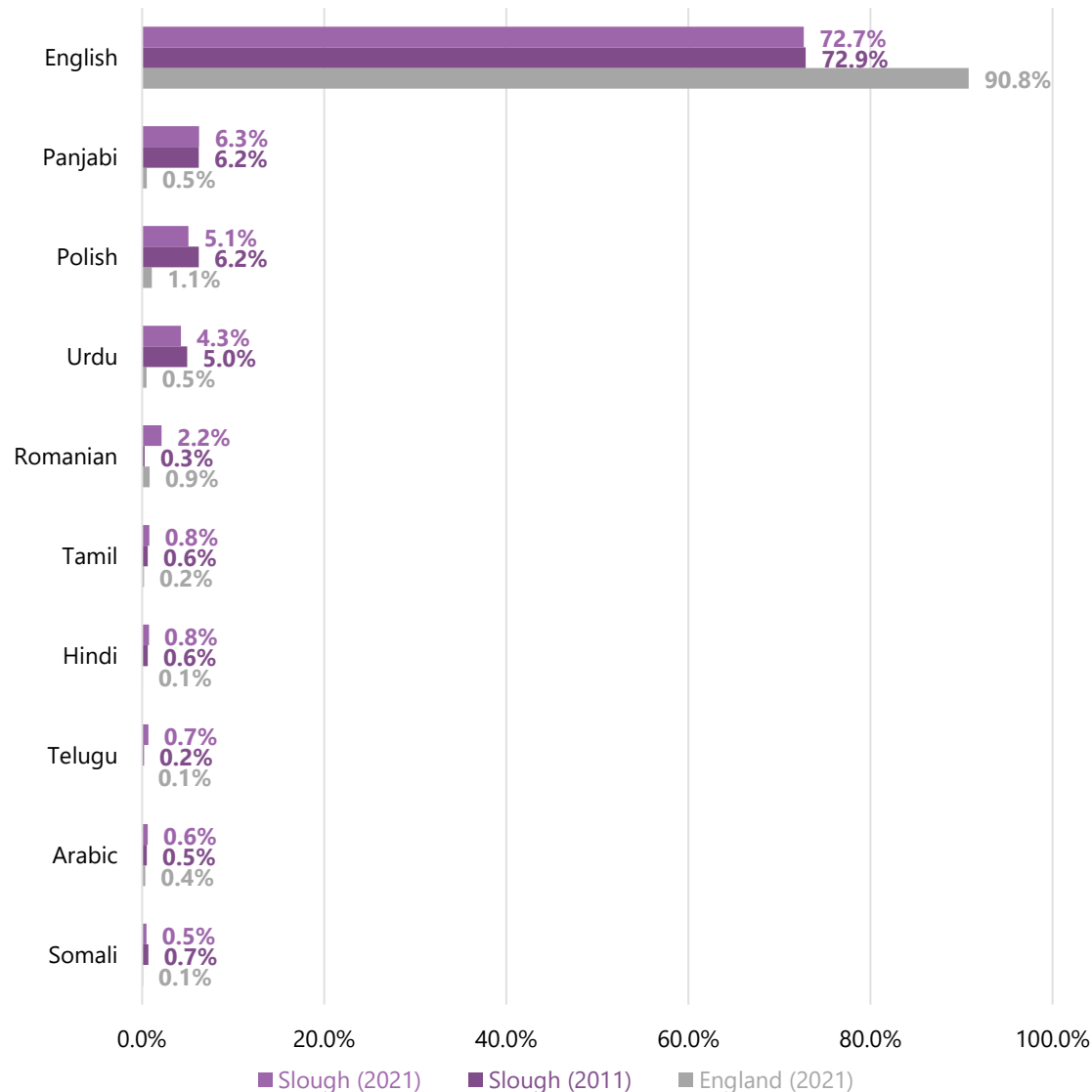
- 7,767 people (4.9%) identify as Polish only
- 6,866 (4.3%) identify as Indian only
- 3,828 (2.4%) identify as Pakistani only
- 3,295 (2.1%) identify as Romanian only

National Identity: Number of Slough Residents	2021	2011	Change
British only identity ¹	96373	49093	+96% ¹
English only identity ¹	11000	47868	-77% ¹
English and British only identity	8248	6416	+29%
Scottish or Scottish & British	402	778	-48%
Welsh or Welsh & British	274	634	-57%
Northern Irish or Northern Irish & British	125	199	-37%
Cornish or Cornish & British	9	11	-18%
Any other combination of only UK identities	98	223	-56%
Non-UK identity only	36460	32490	+12%
Non-UK identity and at least one UK identity	5509	2493	+121%



Population - Language

Main Language



72.7% of Slough's population aged 3 and over speak English as their main language (England: 90.8%).

68 people in Slough use a Sign Language as their main language (57 use BSL).

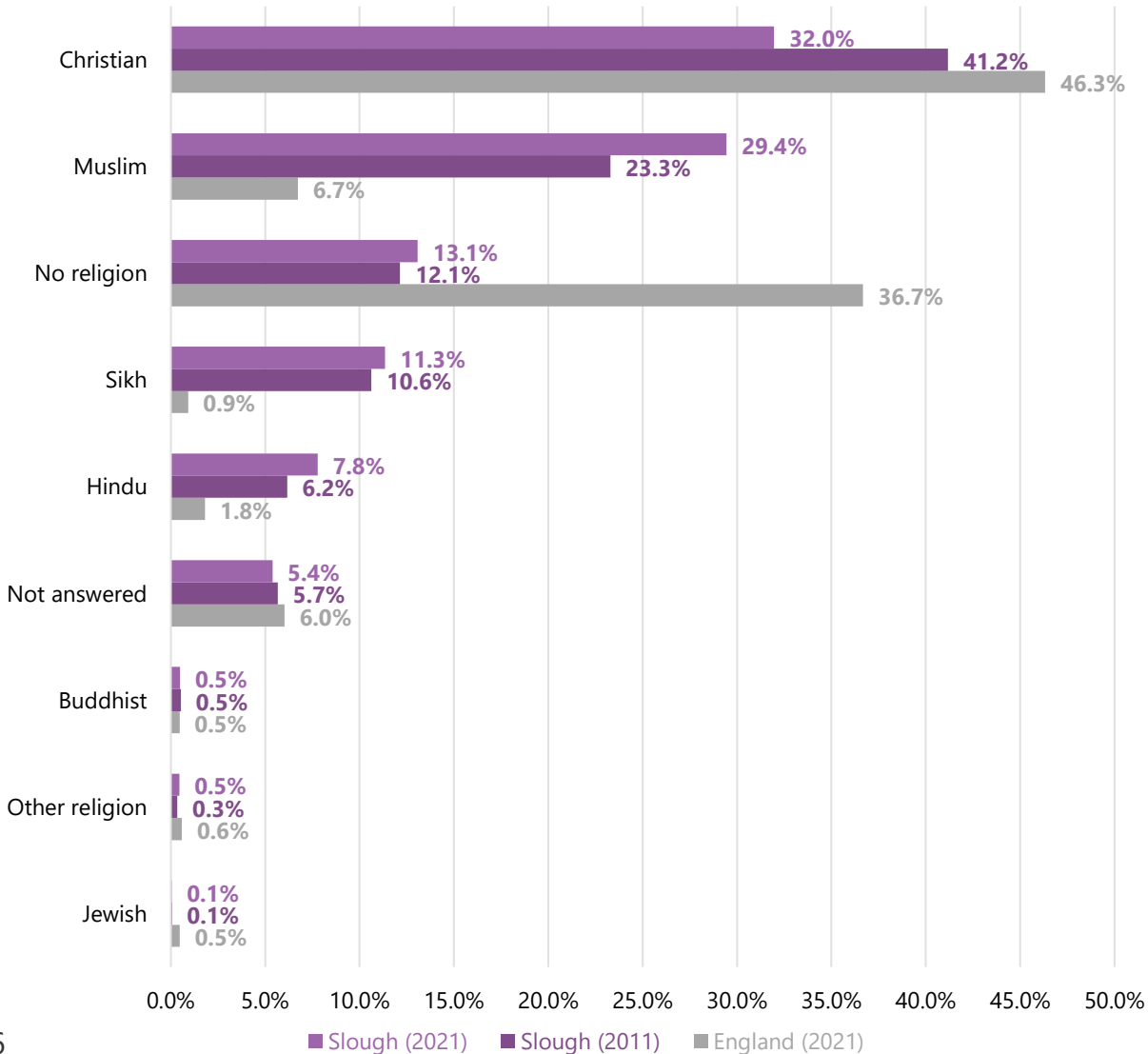
Of those that did not speak English as their main language in Slough, 42.8% can speak English very well, which is an increase of 34% from 2011.

Main Language: Number of Slough Residents	2021	2011	Change
English	110,212	96,508	+14%
Panjabi	9,527	8,247	+16%
Polish	7,724	8,249	-6%
Urdu	6,497	6,568	-1%
Romanian	3,275	401	+717%
Tamil	1,224	860	+42%
Hindi	1,148	825	+39%
Telugu	1,066	275	+288%
Arabic	983	703	+40%
Somali	772	938	-18%



Population - Religion

Religion



The number of Christians in Slough has decreased by 12.2% since 2011, while the number of Muslims has increased by 42.9% and the number of Sikhs has increased by 20.8%.

Slough has the 11th fewest people nationally who stated they have no religion (13.1% of Slough's population, compared to 36.7% for England).

Religion: Number of Slough Residents	2021	2011	Change
Christian	50,664	57,726	-12%
Muslim	46,661	32,655	43%
No religion	20,726	17,024	22%
Sikh	17,985	14,889	21%
Hindu	12,343	8,643	43%
Not answered	8,544	7,956	7%
Buddhist	776	743	4%
Other religion	716	482	49%
Jewish	85	87	-2%



Population - Sexual orientation & gender identity

1.9% of Slough's population identified as an LGB+ orientation (lower than the England average of 3.2%).

0.9% of Slough's population identified as a different gender to their sex registered at birth (same as the England average).

Sexual Orientation (2021)	Slough Number	Slough %	England %
Straight or Heterosexual	104,943	88.2%	89.4%
LGB+ orientation (total)	2,313	1.9%	3.2%
Gay or Lesbian	806	0.7%	1.5%
Bisexual	1,095	0.9%	1.3%
Pansexual	335	0.3%	0.2%
Asexual	29	0.0%	0.1%
Queer	7	0.0%	0.0%
All other sexual orientations	41	0.0%	0.0%
Not answered	11,677	9.8%	7.5%

Gender Identity (2021)	Slough Number	Slough %	England %
Gender identity the same as sex registered at birth	107,503	90.4%	93.5%
Gender identity different from sex registered at birth (total)	1,081	0.9%	0.9%
Gender identity different from sex registered at birth but no specific identity given ¹	633	0.5%	0.2%
Trans woman	186	0.2%	0.1%
Trans man	206	0.2%	0.1%
Non-binary	25	0.0%	0.1%
All other gender identities	31	0.0%	0.0%
Not answered	10,351	8.7%	6.0%

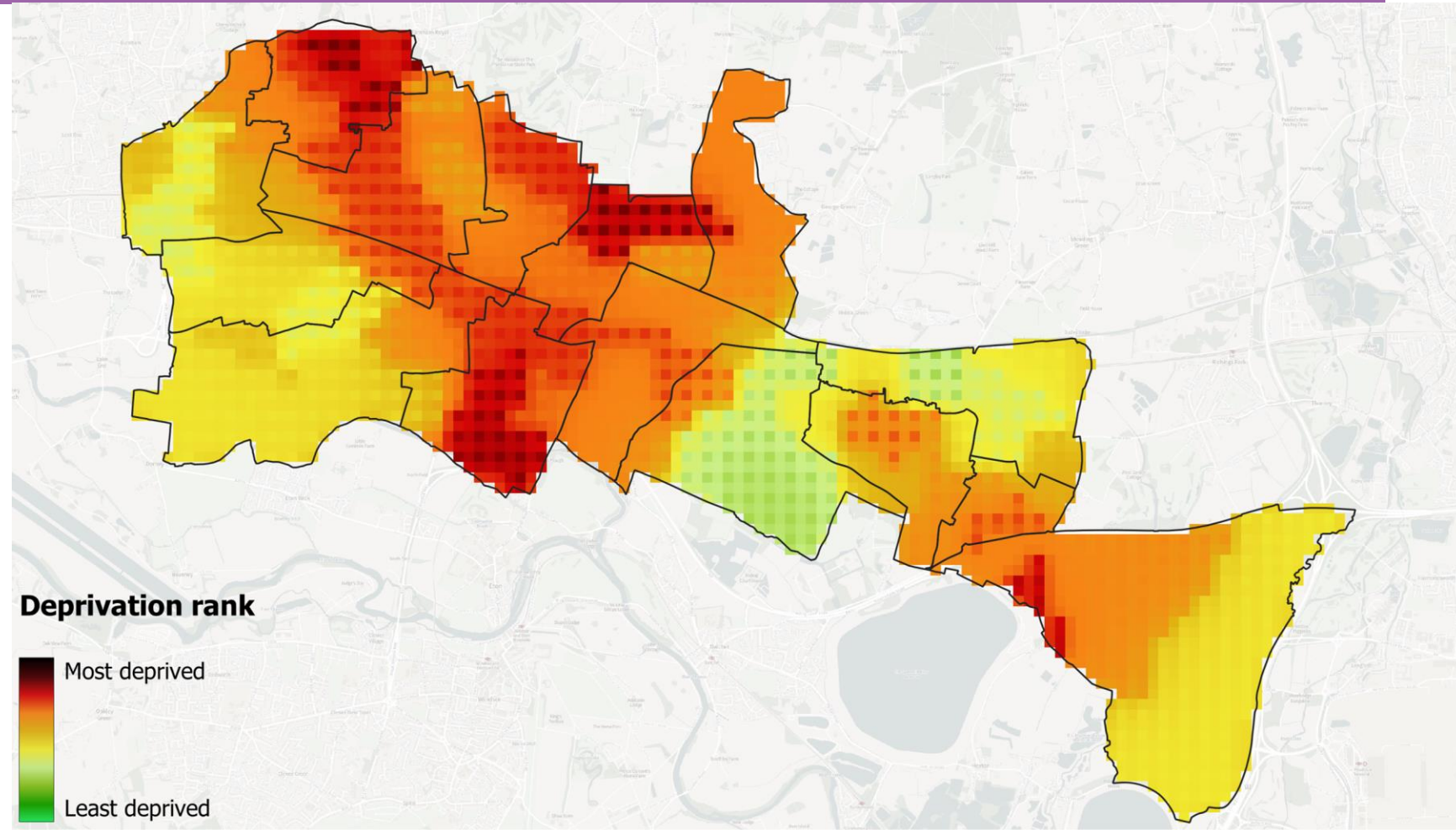


Population – Deprivation (1)

Slough is more deprived than the England average on the 2019 Index of Multiple Deprivation (IMD).

71% of Slough's Lower-tier Super Output Areas (LSOAs) fall below the national average of the IMD.

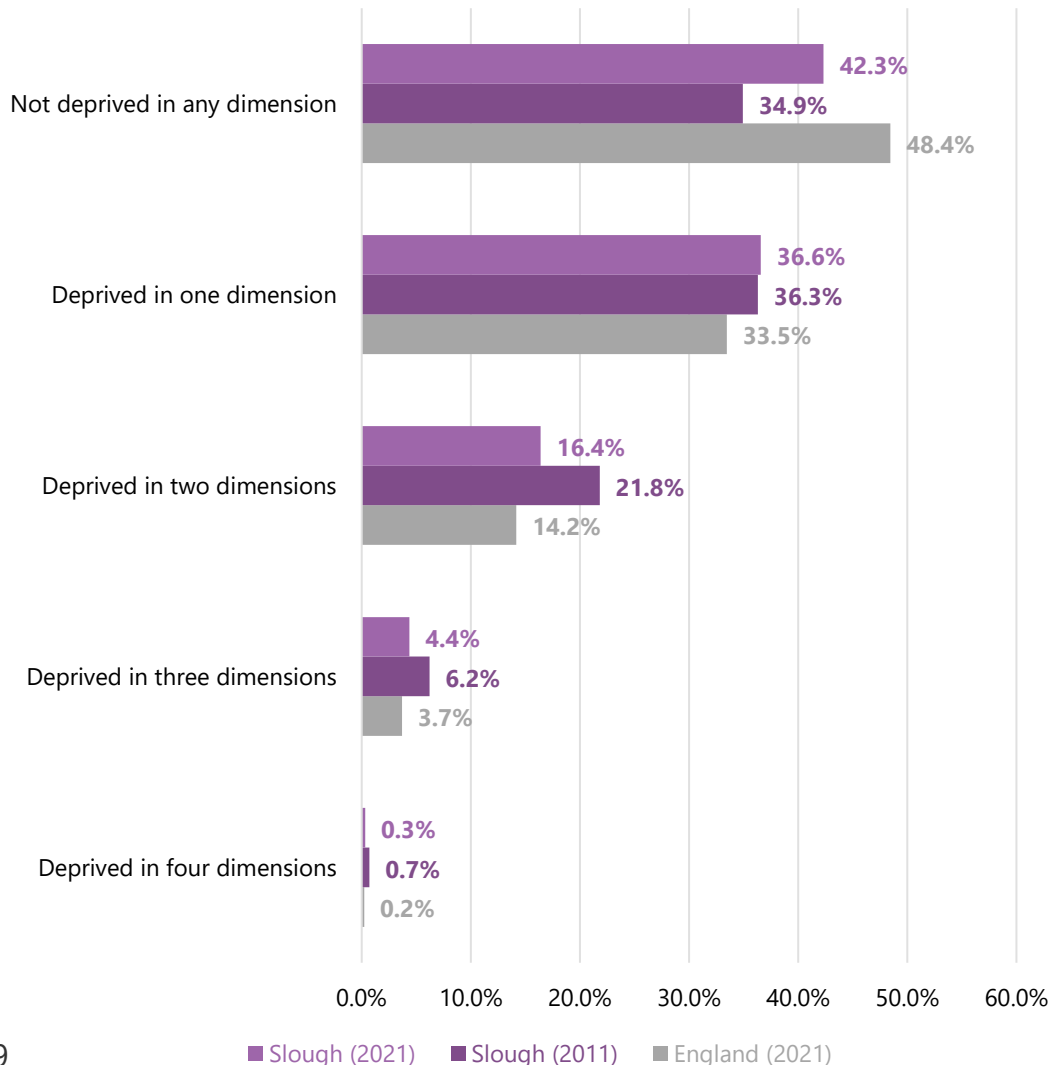
There are particularly severe pockets in Britwell, Chalvey, Wexham Lea, and Colnbrook with Poyle.





Population – Deprivation (2)

Household Deprivation









30,240 households in Slough (57.7%) are deprived in one or more dimension (compared to 51.6% in England). This is a decrease of 8% from 2011, when it was 65.1%.

The number of households deprived in one dimension has increased by 4%, but there has been a 24% decrease in households deprived in two or more dimensions and a 25% increase in households that are not deprived in any dimension.

Household Deprivation: Number of Slough Households	2021	2011	Change
Household is not deprived in any dimension	17,733	22,184	+25%
Household is deprived in one dimension	18,437	19,176	+4%
Household is deprived in two dimensions	11,077	8,603	-22%
Household is deprived in three dimensions	3,156	2,293	-27%
Household is deprived in four dimensions	363	168	-54%

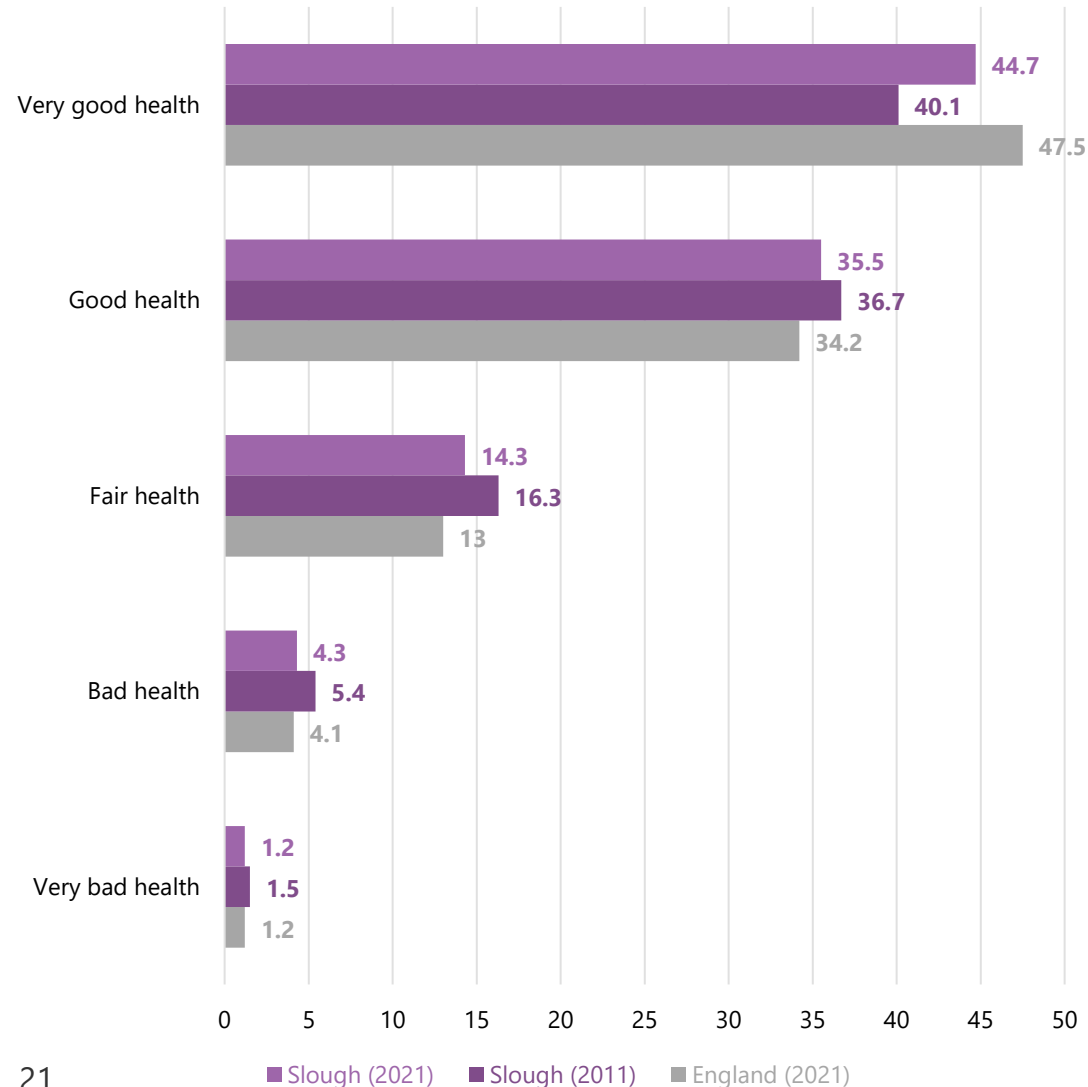
Health Inequalities in Slough

	Health measure	Slough	RBWM	SE
	Healthy life expectancy (M)	58.1	69.4	63.1
	Healthy life expectancy (F)	60.3	70.3	63.9
	Mortality rate: cardiovascular (deaths per 100k under 75)	96.8	50.2	70.4
	Year 6: prevalence of obesity (incl. severe obesity)	28.4%	17.4%	20.0%
	Low birth weight: term babies (under 2,500g)	4.3%	3.8%	2.6%
	% physically active adults (150+ minutes activity per week)	48.8%	70.8%	69.2%



Population - General health

General Health (Standardised)¹



Over half of Slough’s population reported “very good” health in 2021. This proportion has increased since 2011.

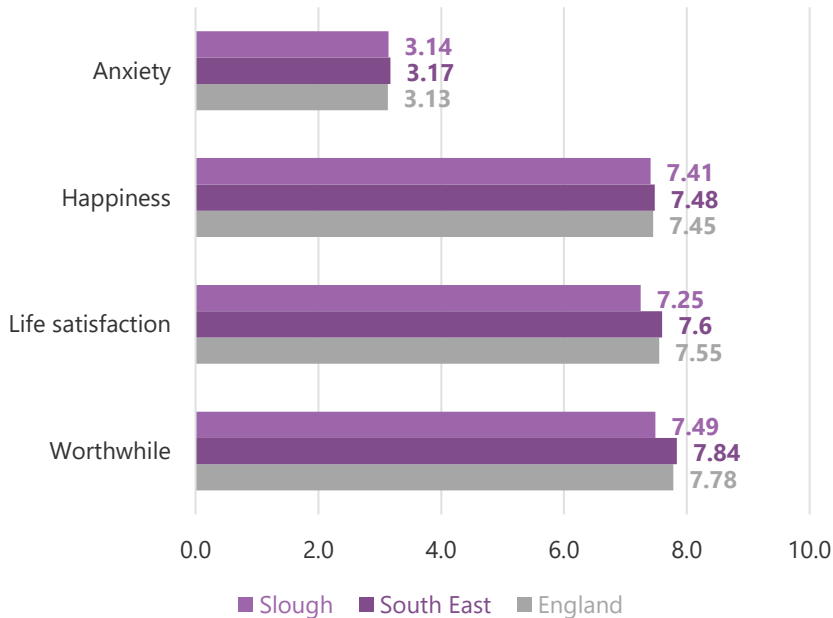
Slough has a smaller proportion of residents reporting they have “very good” health than the England average and a slightly larger proportion of residents with “good” or “fair” health.

General Health (Non-standardised ¹) (2021)	Slough Number	Slough %
Very good health	81,941	51.7%
Good health	53,816	34.0%
Fair health	16,804	10.6%
Bad health	4,625	2.9%
Very bad health	1,314	0.8%



Population - General wellbeing

Average Score



Slough has similar average scores for anxiety and happiness to the South East and England averages, but has lower average scores for life satisfaction and feeling that the things they do are worthwhile.

Slough has smaller proportions of people with “very good” ratings for anxiety, happiness, life satisfaction, and feeling worthwhile than the England average, but has higher proportions of “good” ratings.

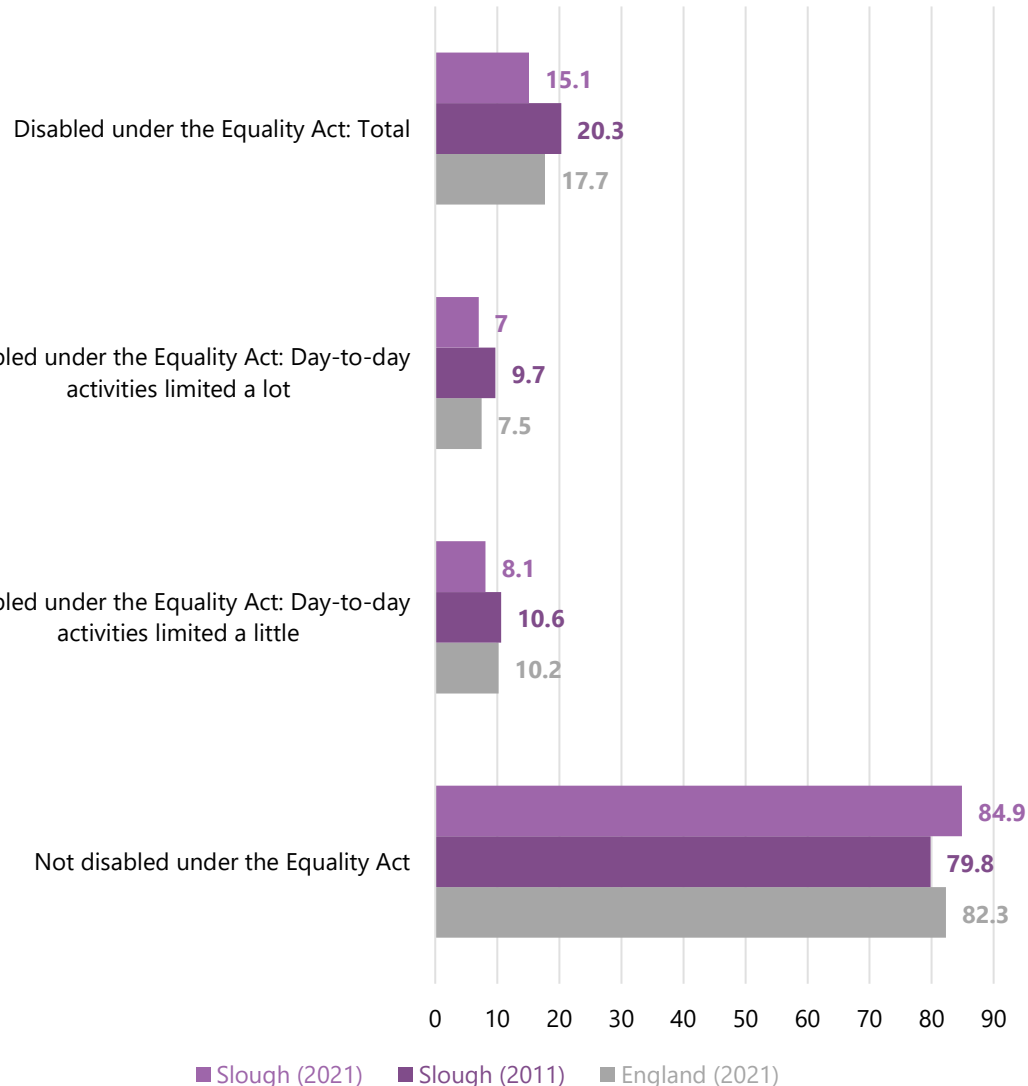
Slough has smaller proportions of “poor” ratings for anxiety and happiness than the England average, but slightly higher proportions for “poor” life satisfaction and feeling worthwhile.

Rating	Slough Anxiety	England Anxiety	Slough Happiness	England Happiness	Slough Life Satisfaction	England Life Satisfaction	Slough Worthwhile	England Worthwhile
Very Good	31.0%	35.7%	31.8%	32.3%	16.0%	26.0%	25.0%	32.6%
Good	29.0%	24.1%	43.8%	42.5%	61.6%	54.0%	53.9%	50.3%
Fair	22.3%	17.6%	16.8%	16.8%	17.0%	15.1%	17.1%	13.1%
Poor	17.8%	22.6%	7.6%	8.4%	5.4%	5.0%	4.1%	4.0%



Population – Disability (1)

Disability (Standardised)¹



The proportion of disabled people in Slough has decreased since 2011. However, it is important to note that the ONS has changed the way it identifies disabled people², which may have impacted the number of people identified as disabled in the data.

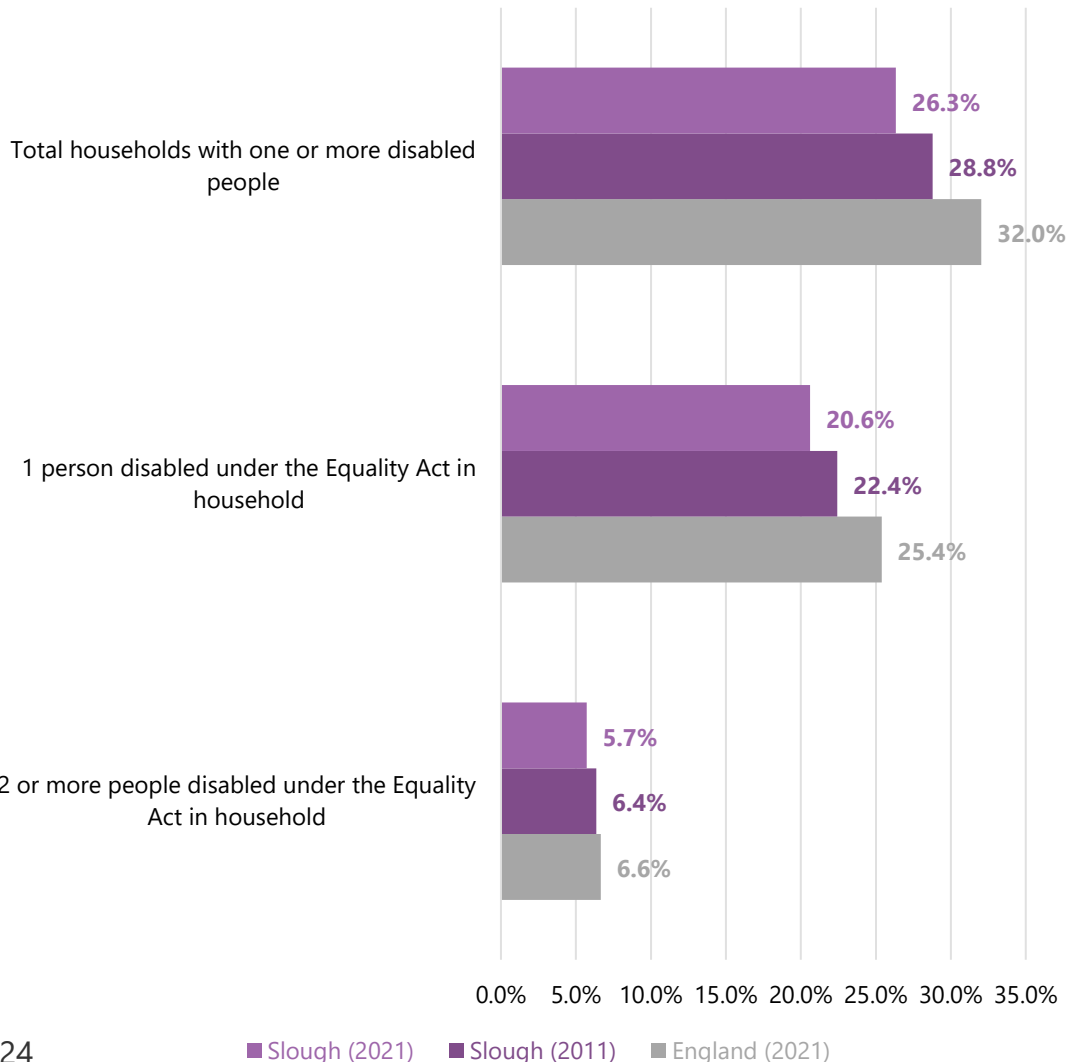
Slough has a smaller proportion of disabled people than the England average.

Disability (Non-standardised ¹) (2021)	Slough Number	Slough %
Disabled: Total	17,975	11.3%
Disabled: Day-to-day activities limited a lot	7,880	5.0%
Disabled: Day-to-day activities limited a little	10,095	6.4%
Not disabled/day-to-day activities not limited	140,523	88.7%



Population – Disability (2)

Number of Disabled People in Household¹



Slough has a smaller proportion of households with disabled residents than the England average.

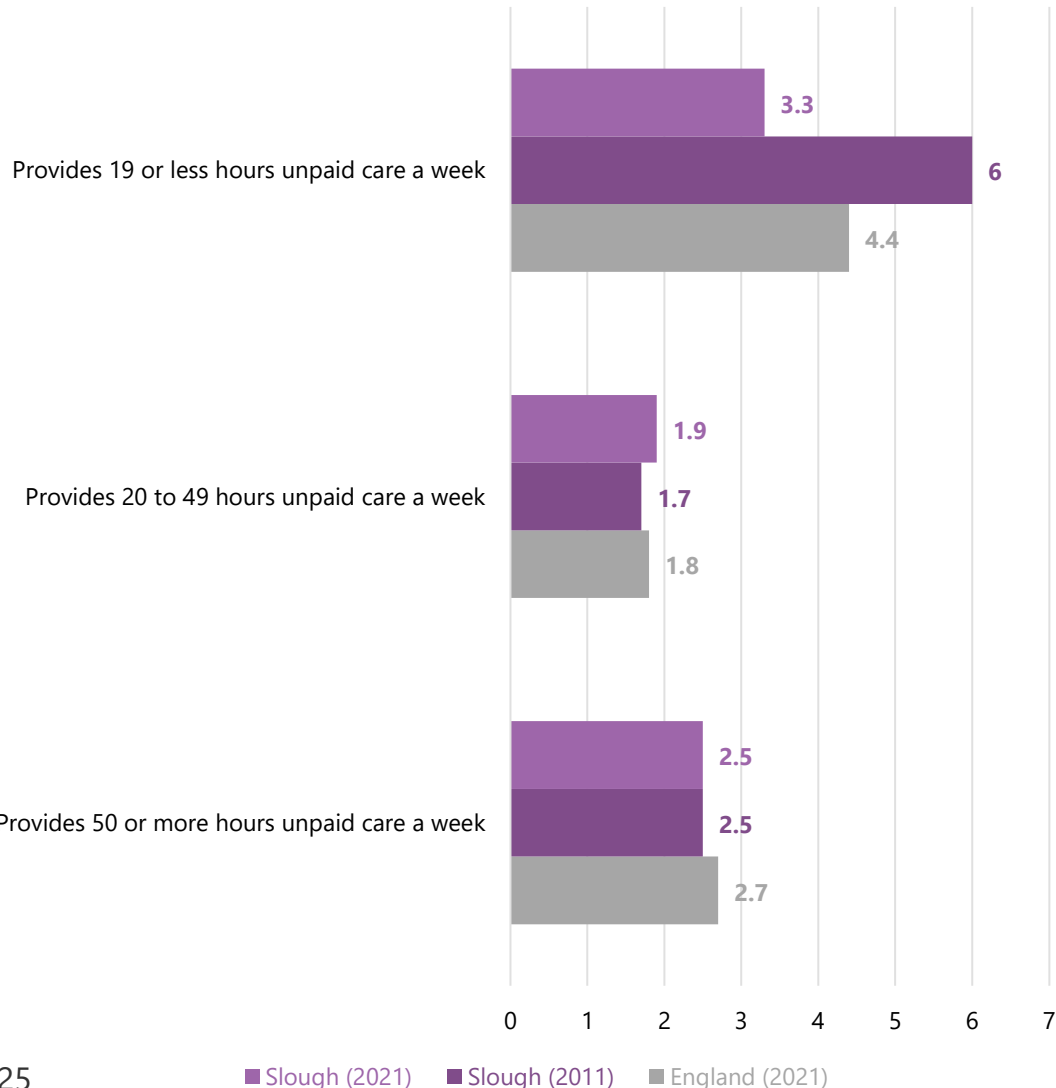
The number of households with one or more disabled people has decreased since 2011. However, it is important to note that the ONS has changed the way it identifies disabled people² since 2011, which may have impacted the number of people identified as disabled in the data.

Number of Disabled People in Slough Households ¹	2021	2011	Change
1 person disabled person in household	10,810	11,388	-5%
2 or more disabled people in household	2,998	3,225	-7%
Total households with 1 or more disabled people	13,808	14,613	-6%



Population – Unpaid care

Unpaid Care (Standardised)¹



The proportion of residents providing 1-19 hours of unpaid care a week has decreased since 2011, but the proportion of residents providing 20-49 hours has increased slightly.

Slough has a smaller proportion of residents providing 19 hours or less of unpaid care a week than the England average.

Unpaid Care (Non-standardised ¹) (2021)	Slough Number	Slough %
Provides 1 to 19 hours unpaid care a week	4,506	2.8%
Provides 20 to 49 hours unpaid care a week	2,644	1.7%
Provides 50 or more hours unpaid care a week	2,994	1.9%

Wider Determinants of Health

Wider determinants of health

The wider determinants of health are a diverse range of social, economic and environmental factors which influence people's mental and physical health.

Relative contribution of determinants of health:

- 30% - Health Behaviours
- 40% - Socio-economic Factors
- 20% - Clinical Care
- 10% - Built Environment

The Public Health Outcomes Framework uses these six domains to map these determinants.



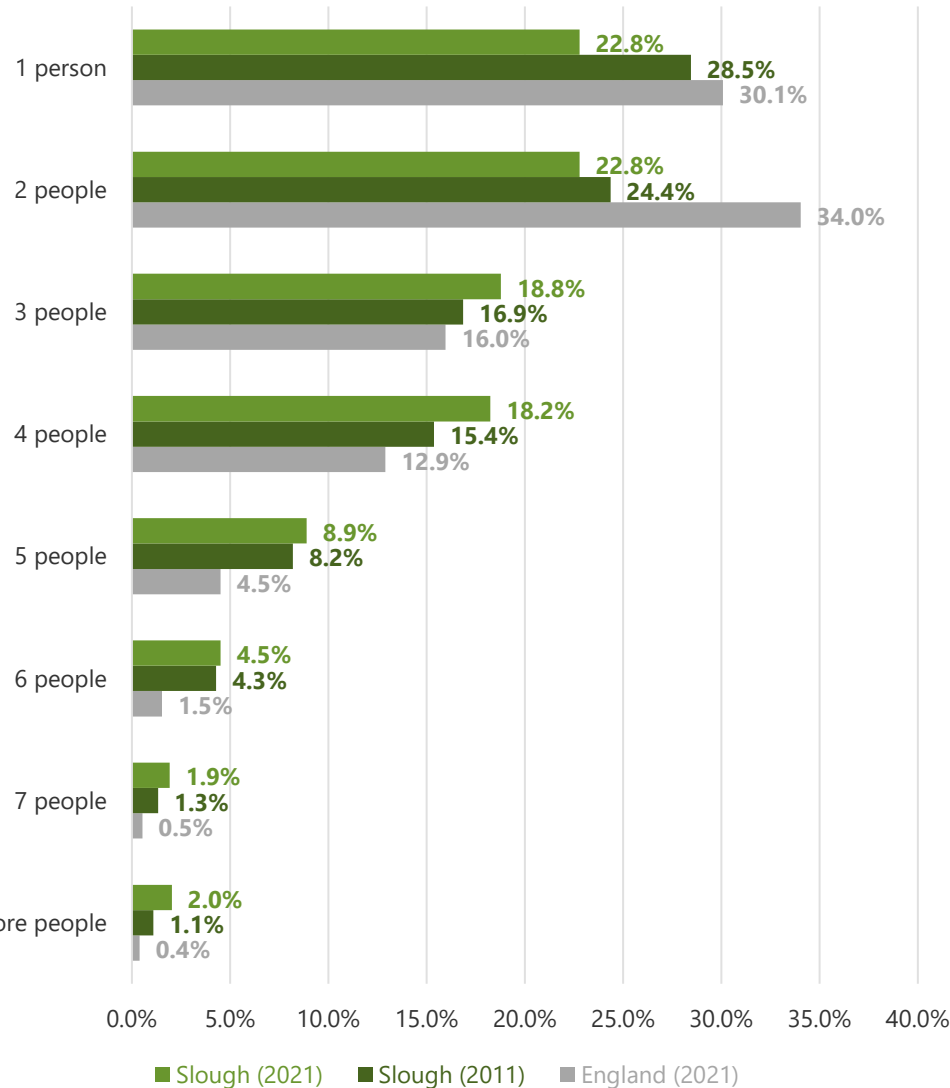
Public Health
Outcomes Framework





Built & Natural Environment – Household size

Household Size



There are 52,423 households in Slough.

Slough has the largest average household size in England and Wales at 3 people per household (England: 2.4).

There has been an increase of 49% in the number of households with 7 people and an increase of 92% in the number of households with 8 or more people.

There are now 2,078 households consisting of 7 or more people.





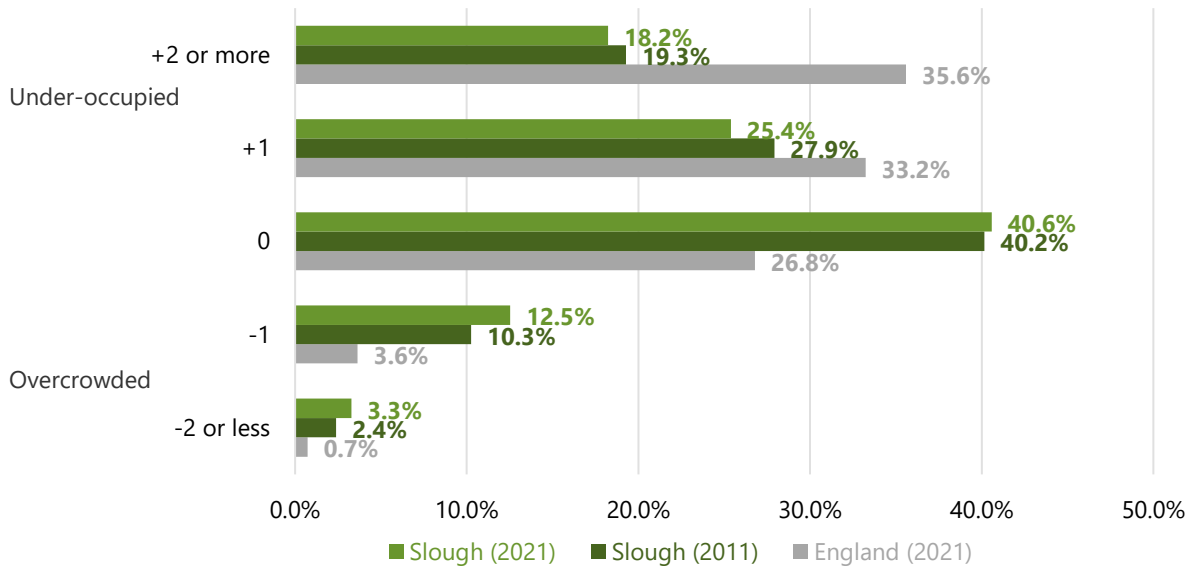
Built & Natural Environment - Overcrowding

15.8% of households in Slough are overcrowded (England: 4.3%).

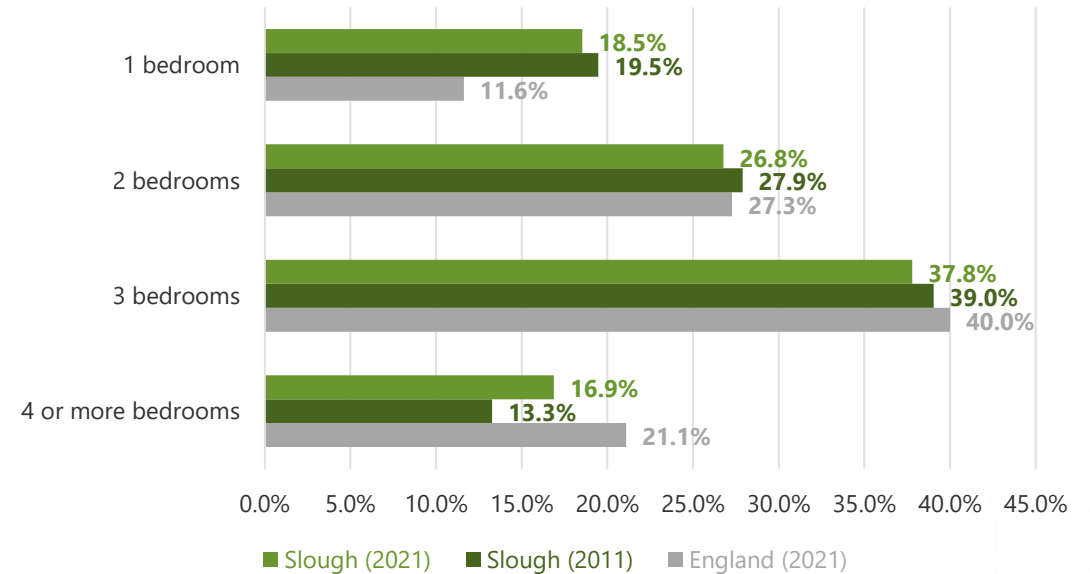
Slough has a higher proportion of 1 bedroom households (18.5%) than the England average (11.6%).

Slough has a smaller proportion of households with 4 or more bedrooms (Slough: 16.9%, England: 21.1%).

Occupancy Rating for Bedrooms



Number of Bedrooms





Built & Natural Environment - Tenure

Slough has a lower proportion of households that outright own their homes than the South East and England averages and the lowest proportion in the South East.

The proportion of households that own their home on a mortgage or loan is the same as England.

Slough has a higher proportion of households renting their homes than the South East and England averages.

The number of households renting privately has increased by 30% since 2011.

Tenure of Household	Slough	South East	England
Owned outright	19.5%	34.3%	32.5%
Owned with a mortgage or loan	29.0%	31.4%	28.8%
Private rented	30.7%	19.2%	20.5%
Social rented	19.6%	13.6%	17.1%



Built & Natural Environment – Accommodation & affordability

Slough has fewer detached houses/bungalows than the South East and England averages and more purpose-built blocks of flats/tenements and terraced houses/bungalows.

Accommodation type	Slough	South East	England
Detached	10.4%	28.0%	22.9%
Semi-detached	29.6%	28.4%	31.5%
Terraced	26.3%	21.3%	23.0%
In a purpose-built block of flats or tenement	29.6%	16.8%	17.1%
Part of a converted or shared house, including bedsits	2.7%	3.1%	3.5%

The average house price in Slough is 10.2 times the average earnings.

	Slough	South East	England
Average house price	£328,207	£393,184	£315,073
Housing affordability ratio	10.2	10.9	9.1

	Slough	South East	England
People claiming housing benefit	11.9%	7.4%	9.2%
Households with no central heating	2%	1.3%	1.5%
Households with no car	20.3%	16.9%	23.5%

Slough has higher proportions of people claiming housing benefit and households with no central heating than the South East and England averages.

Slough has a higher proportion of households with no car than the South East average but lower than the England average.

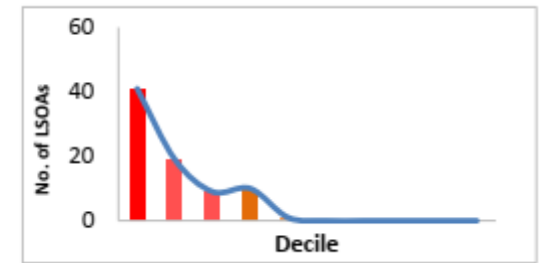




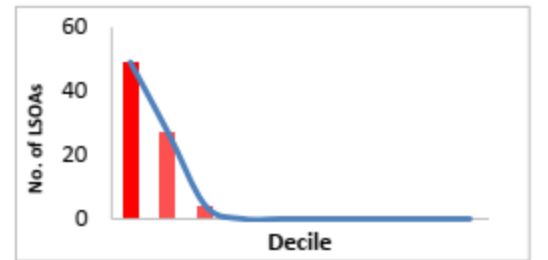
Built & Natural Environment - Deprivation

Slough is more deprived than the England average for barriers to housing and services in the 2019 indices of deprivation and is much more deprived than the average for wider barriers (i.e., overcrowding, homelessness, housing affordability). Slough is also more deprived than the England average for living environment (e.g., condition of home, air quality).

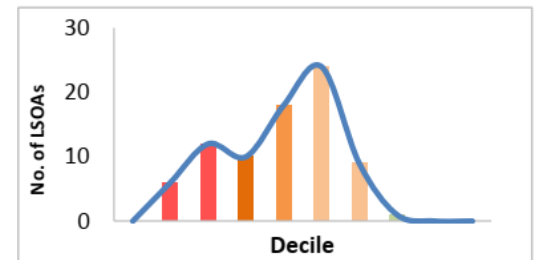
		<div style="display: flex; justify-content: space-between; align-items: center;"> Most Deprived → Least Deprived </div>									
Decile		1	2	3	4	5	6	7	8	9	10
Barriers to Housing and Services	Number of LSOAs	41	19	9	10	1	0	0	0	0	0
	Percentage of LSOAs	51%	24%	11%	13%	1%	0%	0%	0%	0%	0%
	Cumulative Percentage of LSOAs	51%	75%	86%	99%	100%	100%	100%	100%	100%	100%



		<div style="display: flex; justify-content: space-between; align-items: center;"> Most Deprived → Least Deprived </div>									
Decile		1	2	3	4	5	6	7	8	9	10
Wider Barriers Sub-domain Decile	Number of LSOAs	49	27	4	0	0	0	0	0	0	0
	Percentage of LSOAs	61%	34%	5%	0%	0%	0%	0%	0%	0%	0%
	Cumulative Percentage of LSOAs	61%	95%	100%	100%	100%	100%	100%	100%	100%	100%



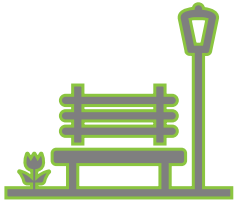
		<div style="display: flex; justify-content: space-between; align-items: center;"> Most Deprived → Least Deprived </div>									
Decile		1	2	3	4	5	6	7	8	9	10
Living Environment	Number of LSOAs	0	6	12	10	18	24	9	1	0	0
	Percentage of LSOAs	0%	8%	15%	13%	23%	30%	11%	1%	0%	0%
	Cumulative Percentage of LSOAs	0%	8%	23%	35%	58%	88%	99%	100%	100%	100%



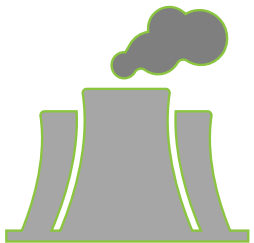
Green spaces and air quality



Slough has 240 hectares of green space (7.4% of the borough, England: 2.2%).



98 hectares of this is public parks and gardens (3% of the borough, England: 0.8%).



However, Slough has higher than average concentrations of Benzene, Nitrogen Dioxide, Particulates and Sulphur Dioxide.

6.3% of mortality in Slough is attributable to particulate air pollution (England: 5.5%).

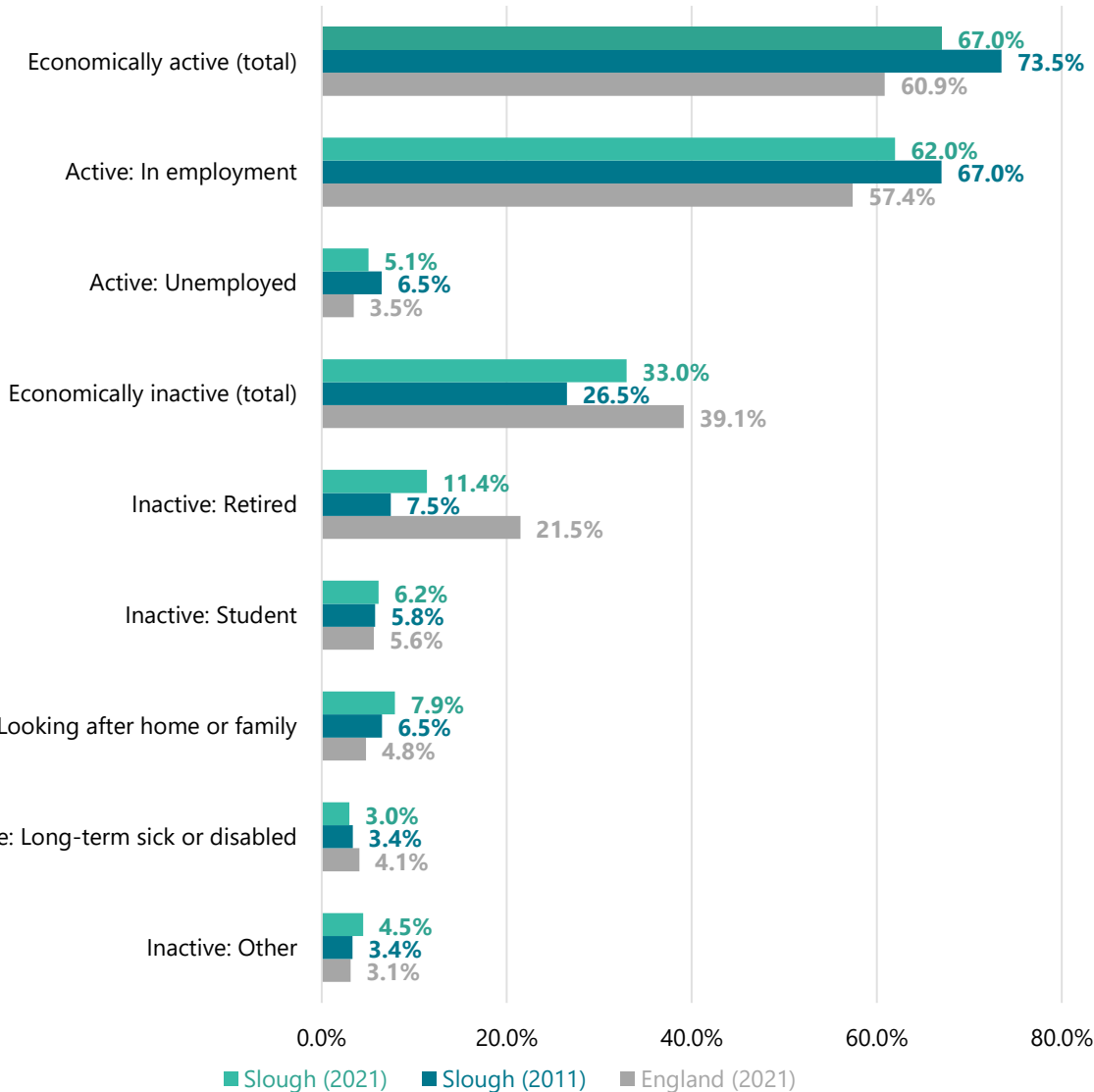






Work & Labour Market – Economic activity

Economic Activity



67% of Slough's population are economically active (England: 60.9%) and 33% are economically inactive (England: 39.1%)

There has been a larger increase in the number of economically inactive people (+47%) than economically active people (+8%) since 2011.



Work & Labour Market – Unemployment & job density

Slough is more deprived than the South East average but less than the England average for employment in the 2019 indices of deprivation.

Slough has a higher proportion of people claiming unemployment benefit than the South East and England averages.

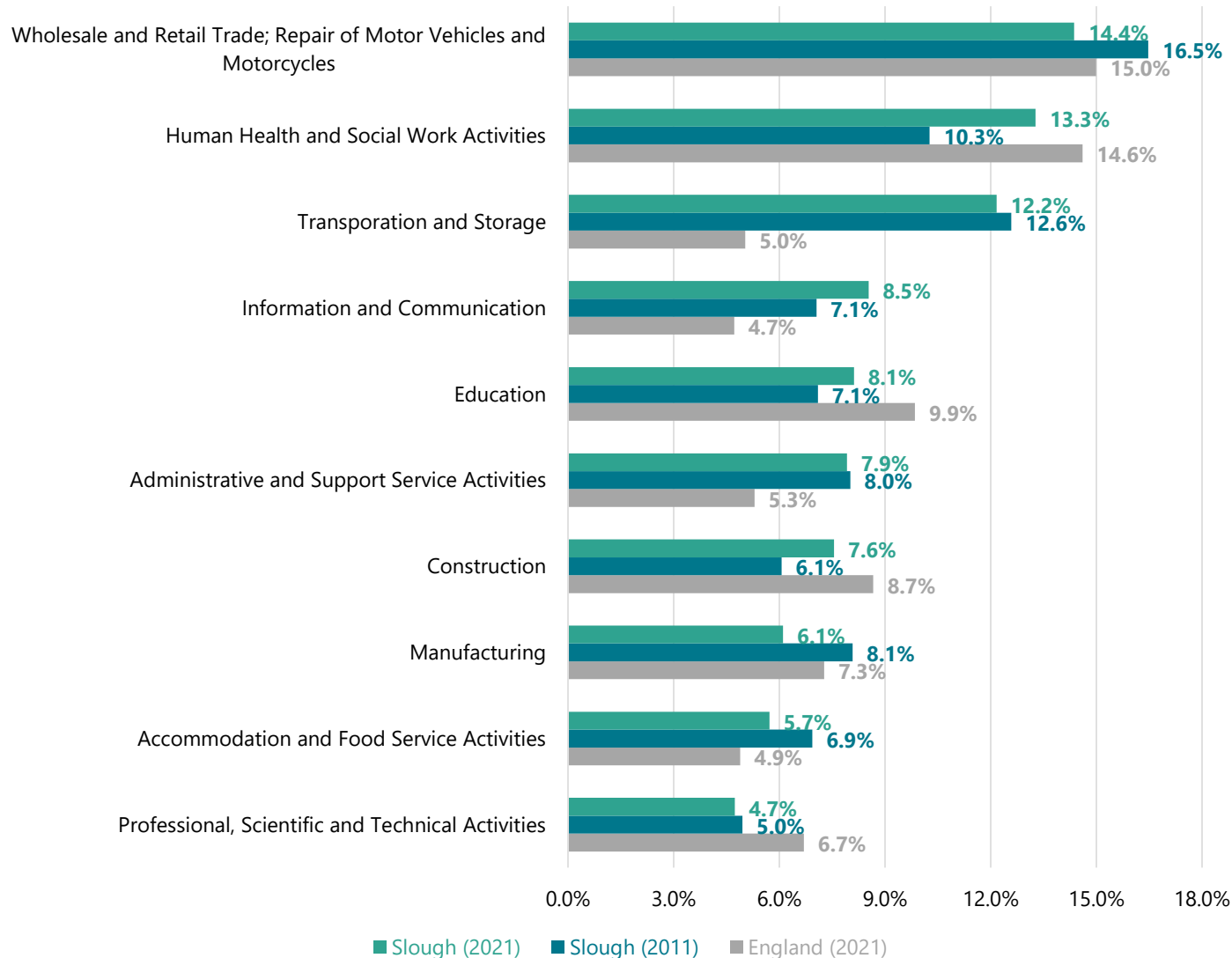
Slough a higher job density than South East and England averages.

	Slough	South East	England
People claiming unemployment benefit (JSA & UC)	5%	2.8%	3.8%
Young people aged 18-24 claiming unemployment benefit (JSA & UC)	5.8%	3.8%	4.8%
Job density	90.2%	70%	78.5%



Work & Labour Market - Industry

Ten Largest (Broad) Industries in Slough



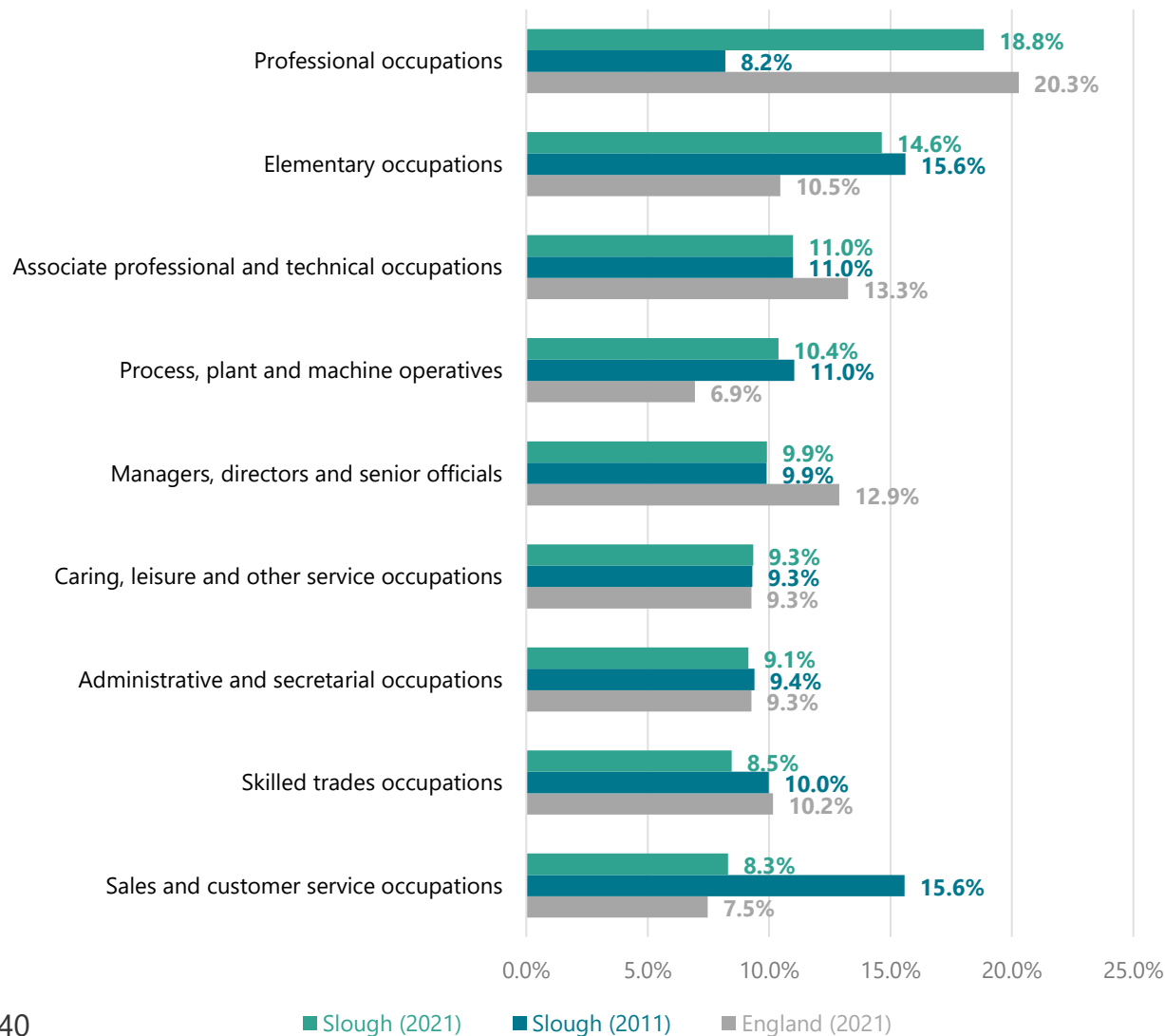
There have been increases of 25% or more in the number of residents working in human health and social work activities, information and communication, education, and construction industries since 2011.





Work & Labour Market - Occupation

Occupation



There has been a 152% increase in the number of residents working in professional occupations.

There has been a 42% decrease in sales and customer service occupations.



Work & Labour Market - Salaries

In January 2023, the median salary of advertised jobs in Slough was £35,000.



The median salary for current SBC employees is £30,095.



Work & Labour Market – Vacancies (1)

Top companies posting job adverts in Slough (Oct 2022 – Dec 2022)

Company	Total Postings	Unique Postings	Posting Intensity	Median Posting Duration (Days)
NHS	4041	644	6:1	35
Academics	1193	349	3:1	52
Reed	835	289	3:1	41
Slough Borough Council	309	132	2:1	60
Mygwork	253	132	2:1	28
Mars Incorporated	218	124	2:1	60
Hays	191	111	2:1	43
O2 Mobile	140	101	1:1	27
Michael Page	183	92	2:1	34
Adecco	275	86	3:1	48
Rise Technical Recruitment Ltd	209	75	3:1	46



Work & Labour Market – Vacancies (2)

Top occupations in job adverts in Slough (Oct 2022 – Dec 2022)

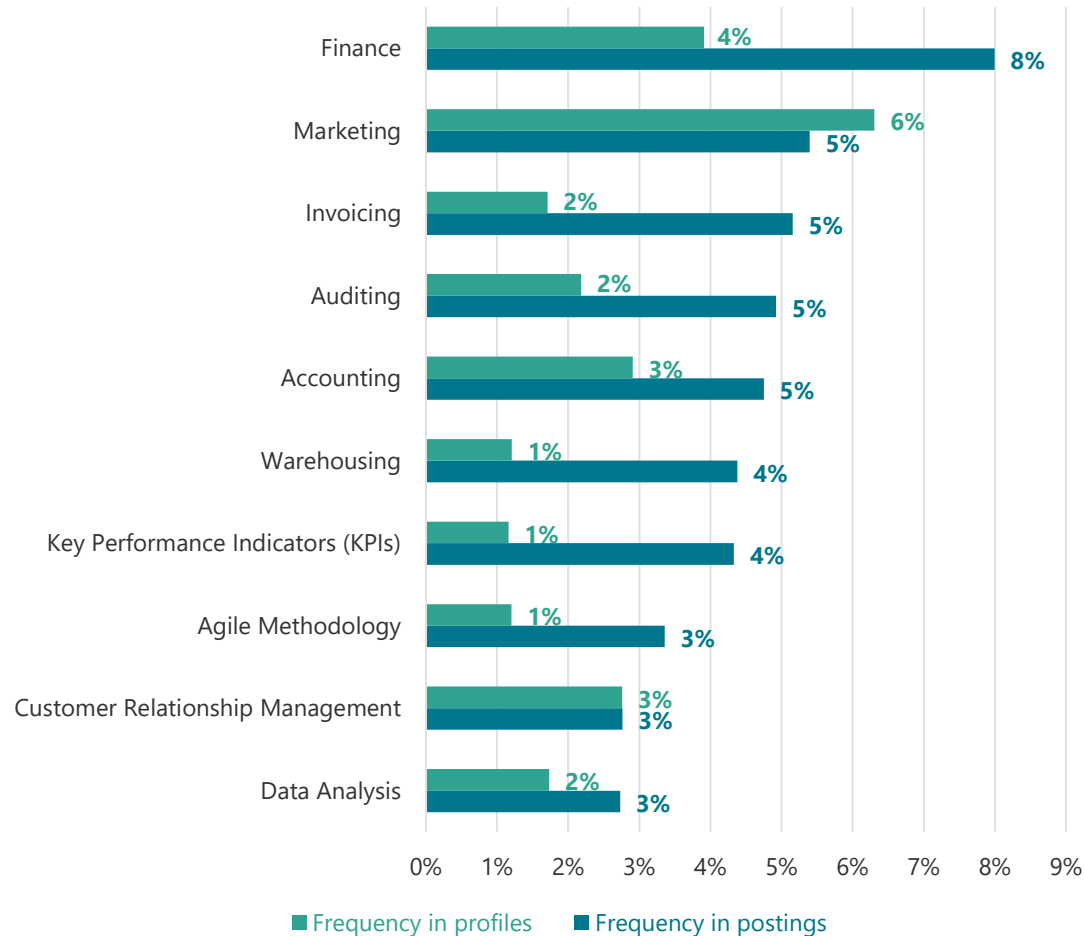
Occupation	Total Postings	Unique Postings	Posting Intensity	Median Posting Duration (Days)
Programmers and software development professionals	667	447	1:1	35
Sales related occupations n.e.c.	847	410	2:1	43
Other administrative occupations n.e.c.	784	351	2:1	40
Customer service occupations n.e.c.	683	300	2:1	46
Teaching assistants	853	299	3:1	41
Marketing and sales directors	490	262	2:1	29
Book-keepers, payroll managers, and wage clerks	488	260	2:1	41
Nurses	2118	255	8:1	32
Elementary storage occupations	552	252	2:1	48
Managers and proprietors in other services n.e.c.	406	206	2:1	34



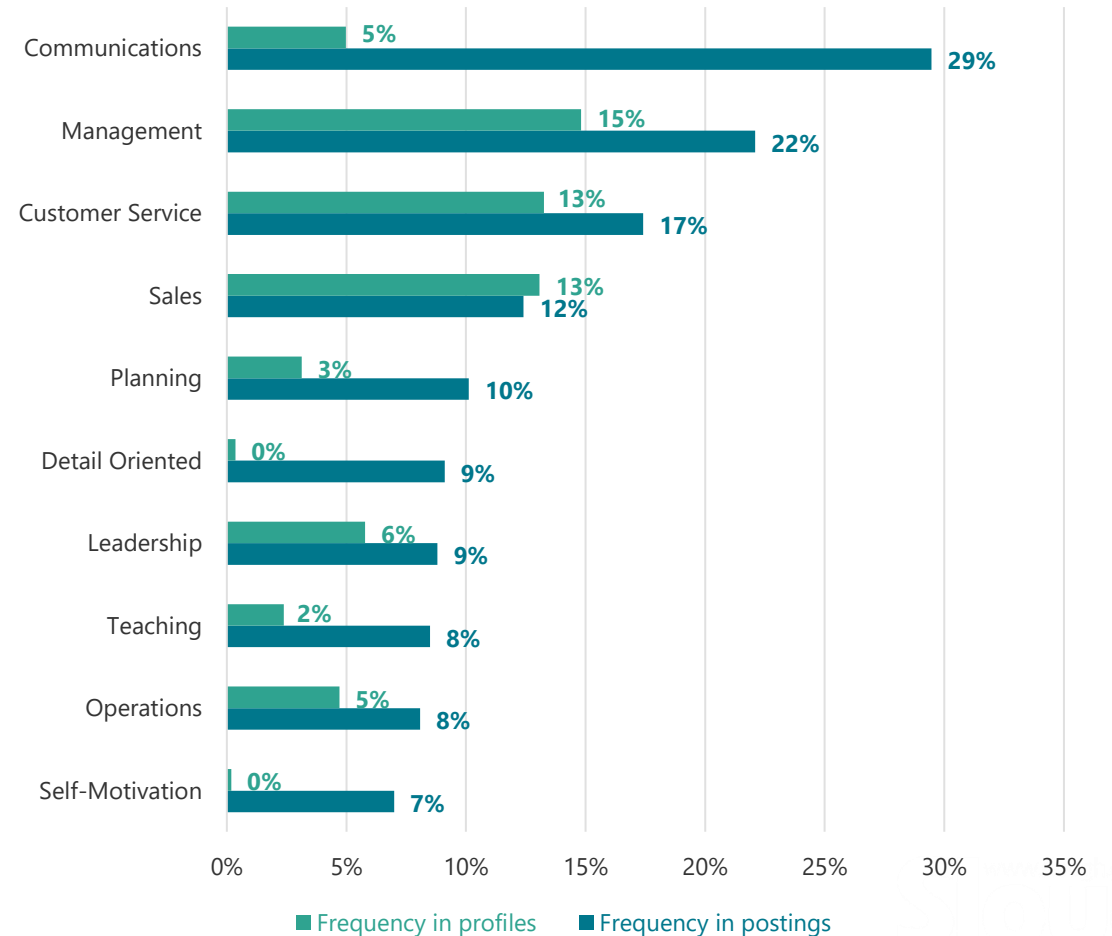
Work & Labour Market - Skills

Top specialised and common skills in job adverts in Slough (Oct – Dec 2022)

Top Specialised Skills



Top Common Skills







Vulnerability – Family income, fuel poverty & loneliness

	Slough	South East	England
Children in relative low income families	22.9%	14.2%	18.7%
Children in absolute low income families	19%	11.6%	15.4%
Pensioners in poverty (receiving pension credit)	17.7%	9.5%	11.2%
Households living in fuel poverty	9.4%	8.5%	13.2%
Hardship Fund Vulnerability Index score (higher score = more vulnerable)	123	109	131
Loneliness Index score (lower score = more loneliness)	-1.4	0.9	0.1

Slough has the highest proportions of children in relative and absolute low income families and pensioners in poverty in Berkshire and has higher proportions than the South East and England averages.

5,180 households were estimated to live in fuel poverty in 2020. Analysis from Frimley Health and Care estimates a significantly higher proportion of the population is at risk.

Slough scored as more vulnerable than the South East average but less than the England average on the Hardship Fund Vulnerability Index.

Slough has a higher rate of loneliness than the South East and England averages.



Vulnerability - Homelessness

	2020-21	2021-22	2022-23 YTD
Number of Homeless Reduction Act (HRA) approaches	1745	1822	766 (Aug)
Preventions	351	212	55 (Aug)
New Homeless cases opened	466	466	210 (Aug)
% Homeless cases agreed	31% (114/373)	38% (170/446)	33% (37/113) (Aug)
Numbers currently in TA	414	462	520 (Sept)

Slough has a rising number of homeless households and people living in Temporary Accommodation.

There are key challenges around housing supply stock availability and affordability.

The private rented sector is being placed under pressure due to no fault evictions (section 21) and additional expense for landlords, leading many to sell.

The voluntary sector are reporting a significant increase in people struggling with bills and the cost of living.

Around 70% of rough sleepers in Slough currently have No Recourse to Public Funds.



Vulnerability – Support

In 2022, Slough Foodbank provided 601 fuel vouchers (97% increase from 2021) and 4,183 food vouchers (19% increase from 2021).

In Jan. 23, Slough Foodbank provided 1,050 food parcels (55% increase from Jan. 22).

Citizens Advice East Berkshire have reported a significant increase in demand:

- Nº of clients: doubled.
- Nº w. debt issues: doubled.
- Nº w. fuel debt: tripled.
- Nº seeking benefits advice: 50% increase

In Dec. 22 – Feb. 23, Citizens Advice East Berkshire gave advice to 365 people:

- 62% were women
- 56% were disabled or have a long-term health condition
- 58% were from Black Asian and Minority Ethnic backgrounds

The top four issues were:

1. Housing – 29%
2. Benefits – 21%
3. Legal – 8%
4. Debt – 7%





Vulnerability – Vulnerable children

Rate (per 10,000 0-17 year olds)	Slough	South East England	
Rate of Targeted Early Help	161	125	N/A
Rate of Children in Need	388.5	329.1	334.3
Rate of children subject to Children in Need Plans	108.8	105.8	91.2
Rate of children subject to Child Protection Plans	57.3	43.1	42.1
Rate of Children Looked After	58.2	56	70

- Slough has higher than average rates of Children in Need and children receiving Targeted Early Help and Child Protection Plans.
- Slough has a lower rate of Children Looked After than the England average and is similar to the South East average.





Vulnerability – Projected adult needs (aged 18-64)

- PANSI projects increases in learning and physical disabilities and mental illness in Slough's population aged 18-64 from 2020 to 2030.
- Most of these increases are in line with the increases for the South East and England.
- However, Slough is predicted to have larger increases in impaired mobility and personal care disabilities in the population than the South East and England.

Projected population change from 2020 to 2030 (Aged 18-64)	Slough Residents 2020	Slough Residents 2030	Slough Change	South East Change	England Change
Learning Disability	2,235	2,268	+1.5%	+1.1%	+1.9%
Down's Syndrome	57	58	+1.8%	+0.7%	+1.5%
Autism	930	953	+2.5%	+1.1%	+2.0%
Common Mental Health Problems	17,191	17,336	+0.8%	+0.6%	+1.4%
Impaired Mobility	4,596	4,846	+5.4%	+2.6%	+3.3%
Personal Care Disability	4,059	4,324	+6.5%	+1.5%	+2.1%



Vulnerability – Projected adult needs (aged 65 and over)

- POPPI projects increases in support needs, health issues, and disabilities in Slough’s population aged 65 and over from 2020 to 2030.
- Most of these increases are in line with the increases for the South East and England.
- However, Slough is predicted to have larger increases in learning disabilities, Autism, depression, and cardiovascular disease in the population than the South East and England.

Projected population change from 2020 to 2030 (Aged 65 and over)	Slough Residents 2020	Slough Residents 2030	Slough Change	South East Change	England Change
Learning Disability	325	404	+24.3%	+20.9%	+20.8%
Autism	146	185	+26.7%	+22.3%	+22.0%
Impaired Mobility	2,749	3,393	+23.4%	+24.1%	+23.0%
Self Care Disability	4,309	5,416	+25.7%	+23.7%	+22.9%
Limiting Long-Term Illness (activities limited a lot)	4,271	5,255	+23.0%	+24.3%	+23.0%
Need help with at least one domestic task	4,323	5,434	+25.7%	+24.0%	+23.1%
Depression	1,326	1,667	+25.7%	+21.2%	+20.9%
Dementia	1,041	1,301	+25.0%	+26.7%	+25.2%
Cardiovascular Disease	4,879	6,158	+26.2%	+22.5%	+22.0%





Income – Weekly earnings

Slough residents earn £27.8 less per week than the regional average.

There is a gap of £84 between Slough residents (£657.5) and all those who work in Slough (£741.5).

Earnings by Residence: Gross Weekly Pay (£)	Slough	South East	Great Britain
Full Time Earners	657.5	685.3	642.2
Males	683.2	735.4	687.5
Females	625.7	610.7	584.5

Earnings by Place of Work: Gross Weekly Pay (£)	Slough	South East	Great Britain
Full Time Earners	741.5	664.3	642.0
Males	831.7	708.9	686.7
Females	658.1	593.8	584.5

Earnings by Residence: Hourly Pay (£) (excl. overtime)	Slough	South East	Great Britain
Full Time Earners	16.93	17.58	16.37
Male	18.15	18.49	16.97
Females	15.56	16.26	15.49

Earnings by Place of Work: Hourly Pay (£) (excl. overtime)	Slough	South East	Great Britain
Full Time Earners	18.99	16.99	16.37
Male	20.26	17.88	16.96
Females	17.35	15.65	15.48



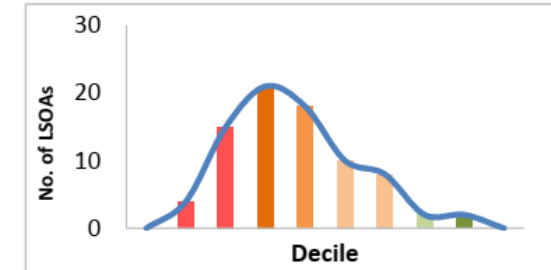
Income – Deprivation

The charts below show where Slough’s neighbourhoods fall on the income domains of the 2019 Indices of Deprivation. For all three, most of Slough’s LSOAs fall below the national average.

For further data on children living in low-income families and pensioners in poverty, please see slide 45.

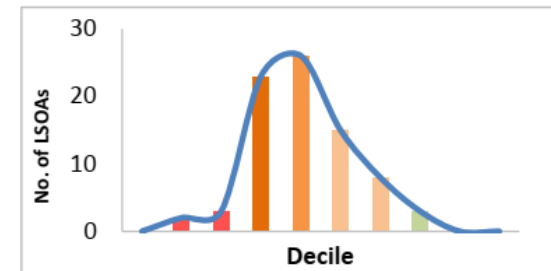
Most Deprived → Least Deprived

		Decile	1	2	3	4	5	6	7	8	9	10
Income	Number of LSOAs		0	4	15	21	18	10	8	2	2	0
	Percentage of LSOAs		0%	5%	19%	26%	23%	13%	10%	3%	3%	0%
	Cumulative Percentage of LSOAs		0%	5%	24%	50%	73%	85%	95%	98%	100%	100%



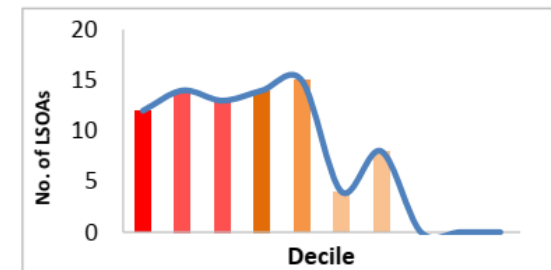
Most Deprived → Least Deprived

		Decile	1	2	3	4	5	6	7	8	9	10
Income Deprivation Affecting Children Index (IDACI)	Number of LSOAs		0	2	3	23	26	15	8	3	0	0
	Percentage of LSOAs		0%	3%	4%	29%	33%	19%	10%	4%	0%	0%
	Cumulative Percentage of LSOAs		0%	3%	6%	35%	68%	86%	96%	100%	100%	100%



Most Deprived → Least Deprived

		Decile	1	2	3	4	5	6	7	8	9	10
Income Deprivation Affecting Older People (IDAOP)	Number of LSOAs		12	14	13	14	15	4	8	0	0	0
	Percentage of LSOAs		15%	18%	16%	18%	19%	5%	10%	0%	0%	0%
	Cumulative Percentage of LSOAs		15%	33%	49%	66%	85%	90%	100%	100%	100%	100%







Crime - Rates

Year ending September 2022

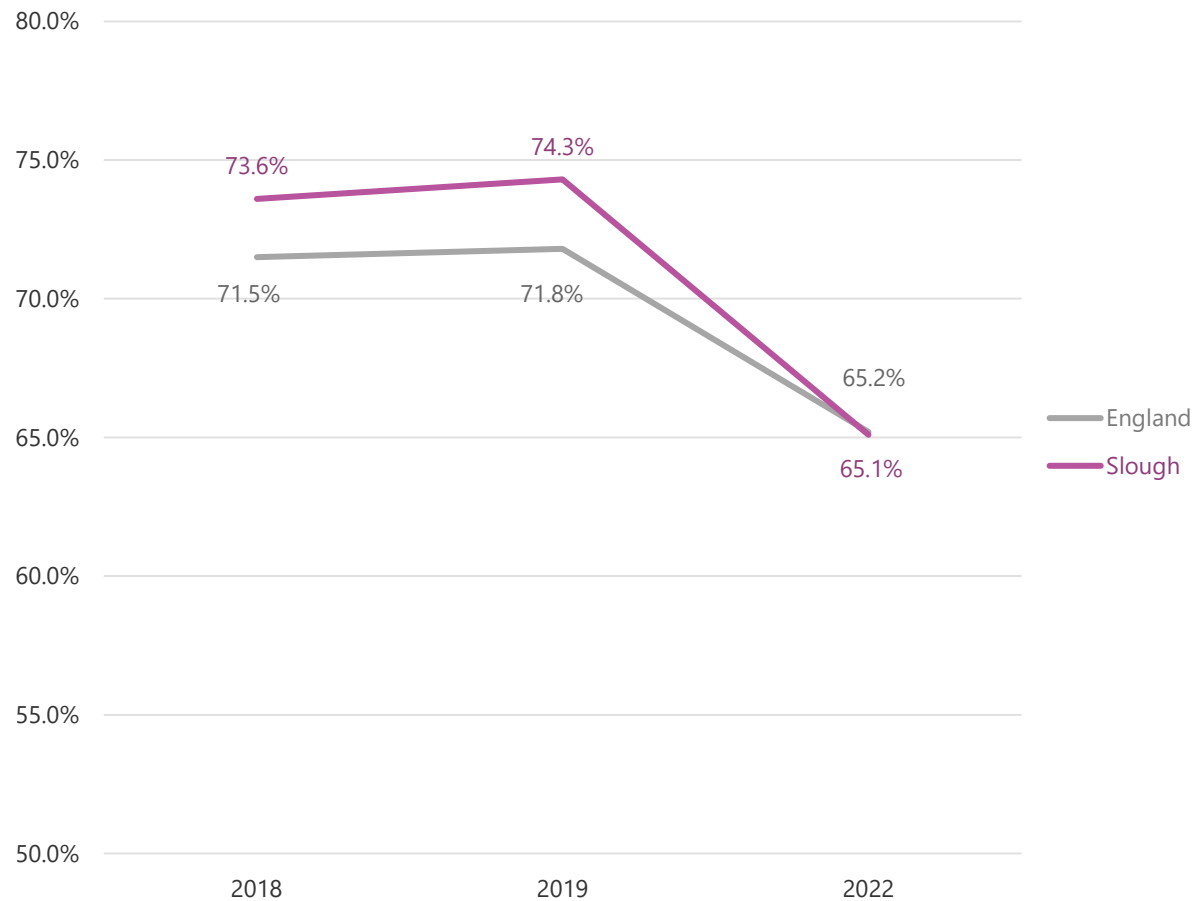
Crime	Slough Number	Slough Rate (per 1,000 pop)	TVP Rate (per 1,000 pop)	Eng & Wal Rate (per 1,000 pop)
Total recorded crime	16,542	111	74	82
Violence against the person	6,388	43	27	32
Sexual offences	489	3	3	3
Theft offences	4,930	33	23	23
Criminal damage	1,551	10	7	8
Drug offences	440	3	2	3
Public order offences	2,226	15	10	9





Education – EYFS

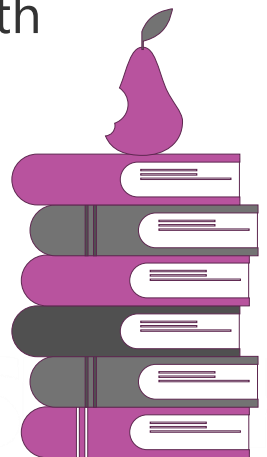
EYFS - Percentage achieving a good level of development



Prior to COVID, Slough was performing in the top quartile nationally for the proportion of children who achieved a good level of development at Early Years Foundation Stage.

Slough is now slightly below the national average.

2022 is not directly comparable with previous years due to the introduction of a new framework for EYFS.

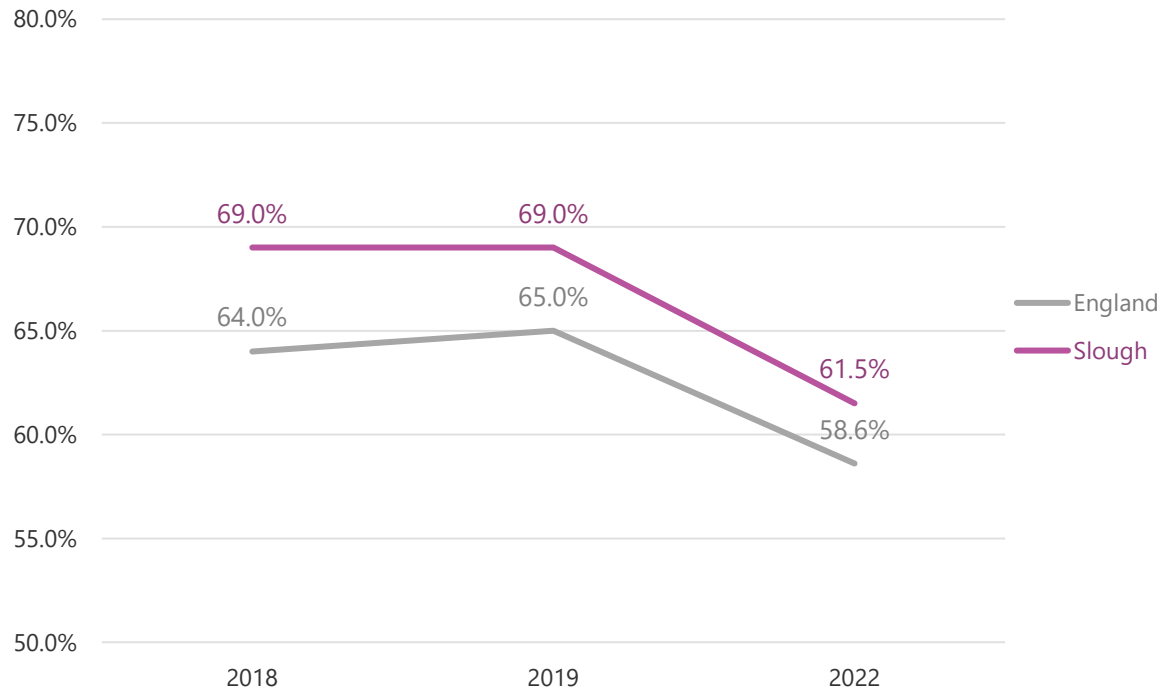




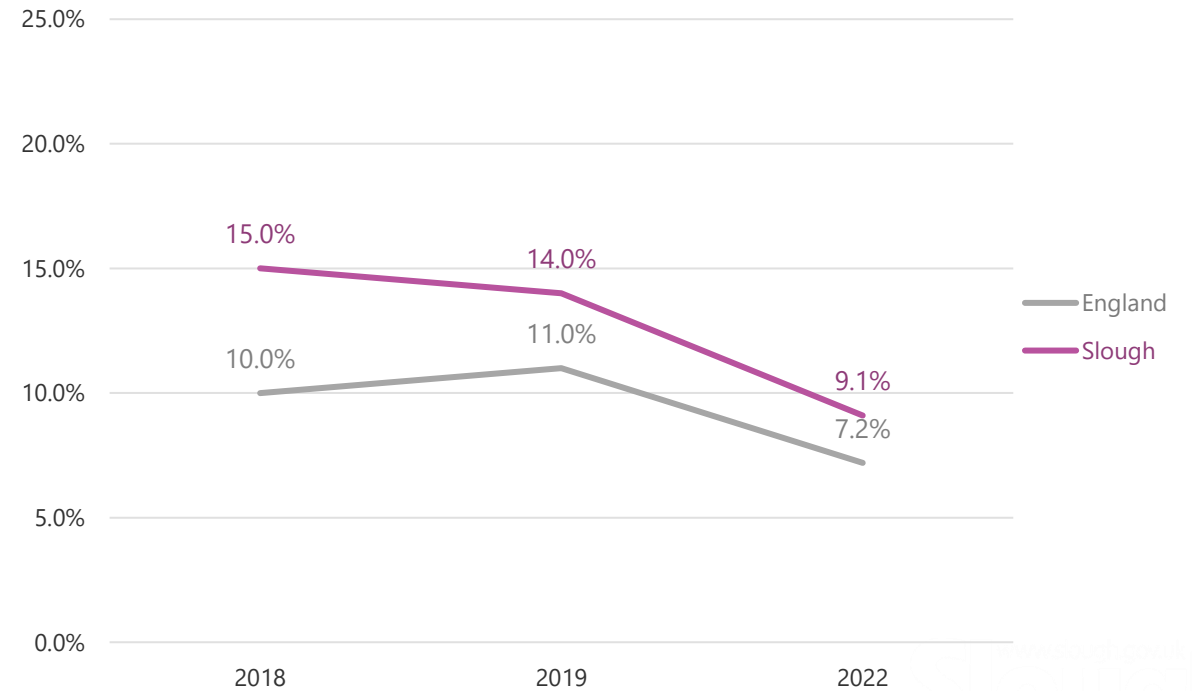
Education – Key Stage 2

Slough significantly exceeds the national average for attainment at KS2.

KS2 - Percentage achieving expected standard – Reading, Writing and Maths (Combined)



KS2 - Percentage achieving higher standard – Reading, Writing and Maths (Combined)

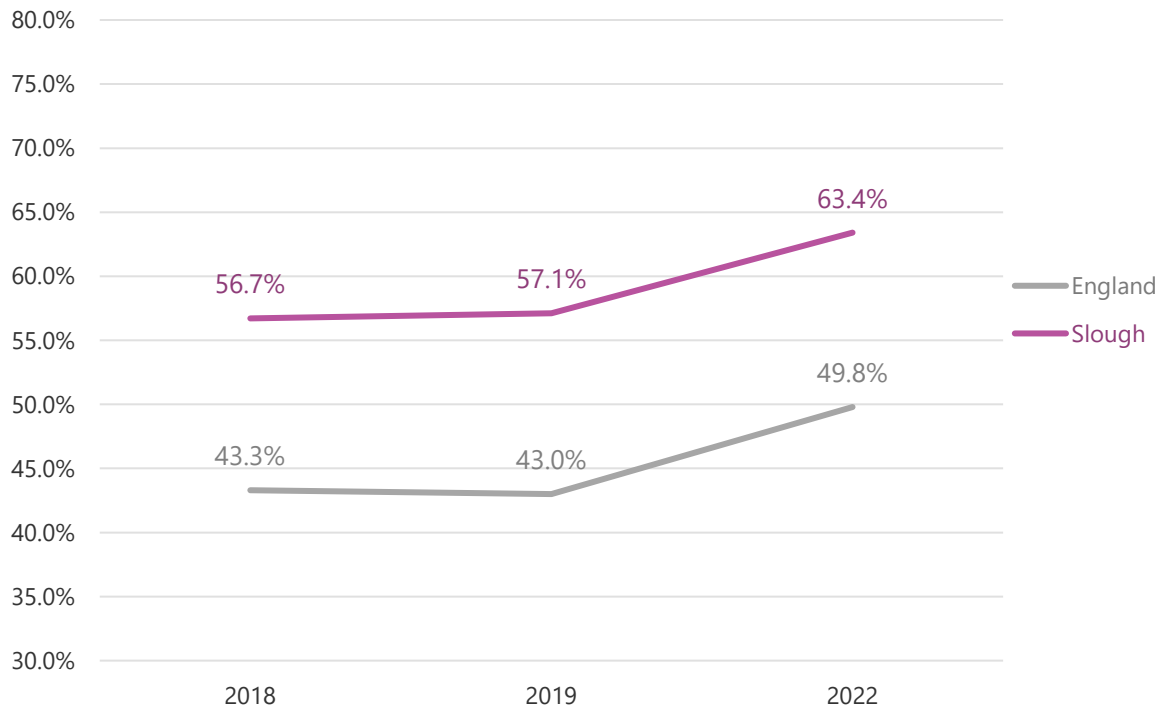




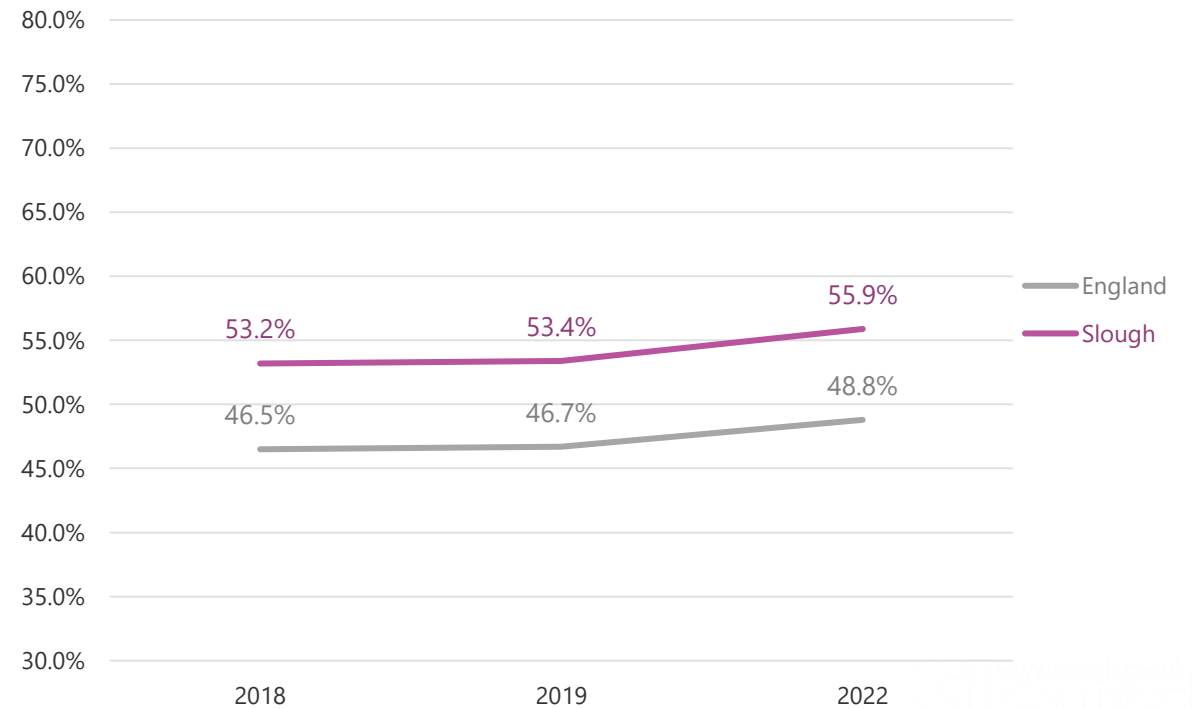
Education – Key Stage 4

Slough's results continue to exceed national averages at KS4, falling in the top quartile.

Percentage Grade 5 or above in English and Maths GCSEs



Attainment 8



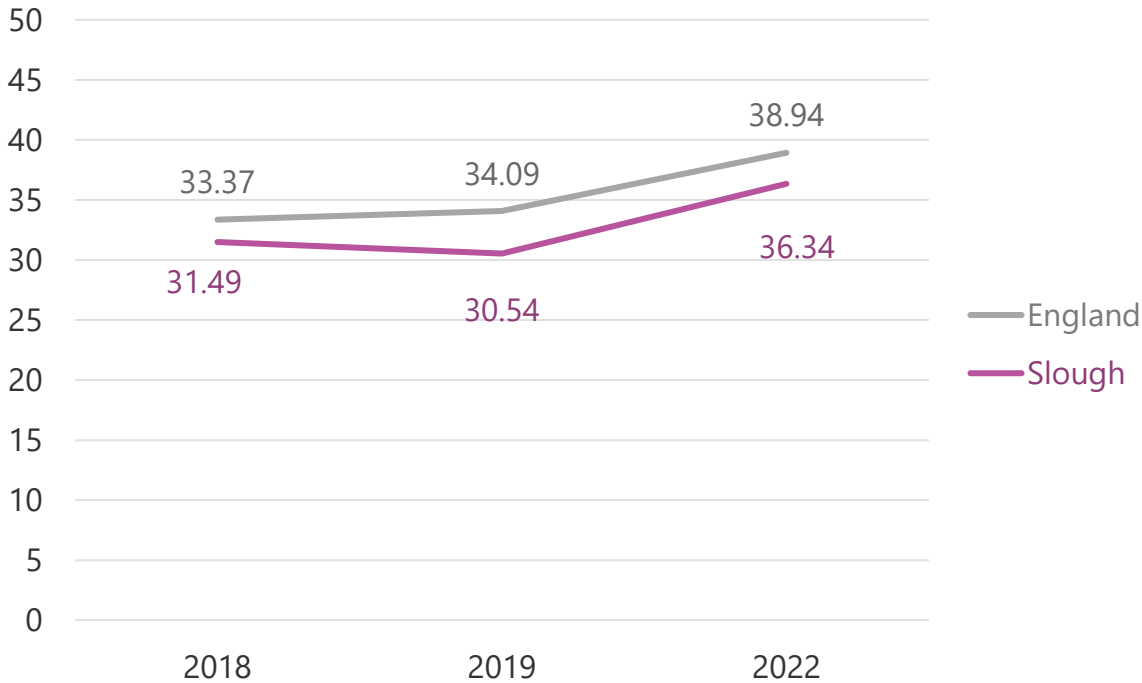


Education – Post-16

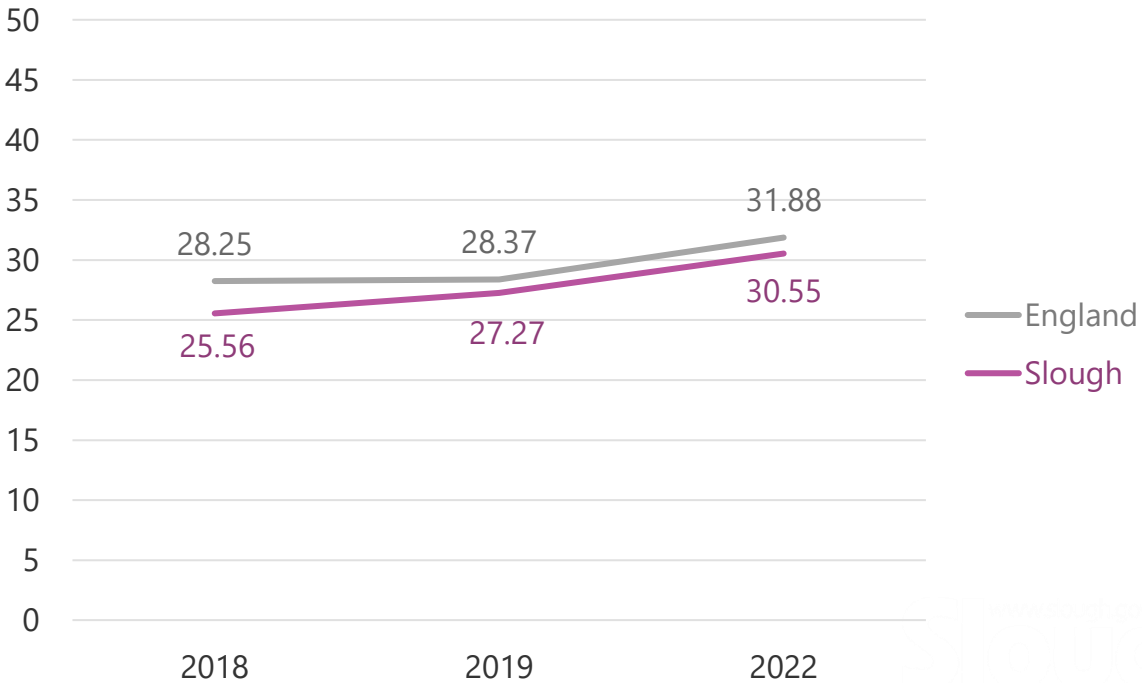
94.3% of 16-17 year olds in Slough are in Education or Training (SE: 92.0%, Eng: 92.9%)

However, Slough is achieving lower grades (fewer average points per entry) at A-level or equivalent than the England average.

Average points per entry: Academic students



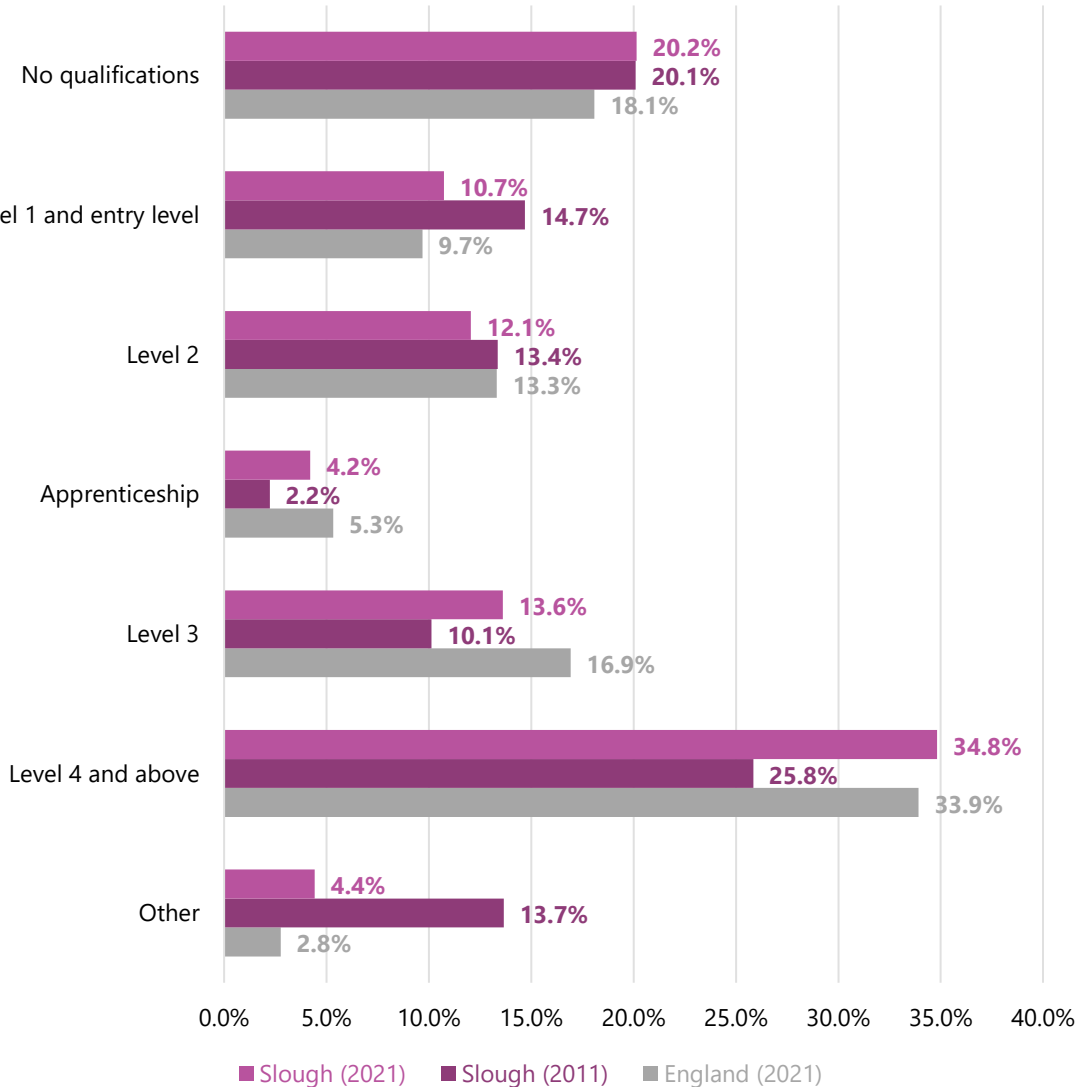
Average points per entry: Applied general students





Education - Qualifications

Highest Qualification



There has been a 50% increase in the number of Slough’s residents holding a level 4 qualification (degree equivalent) or above since 2011.

Slough is slightly below the national average in terms of levels of qualification – falling in the 41st percentile nationally.¹

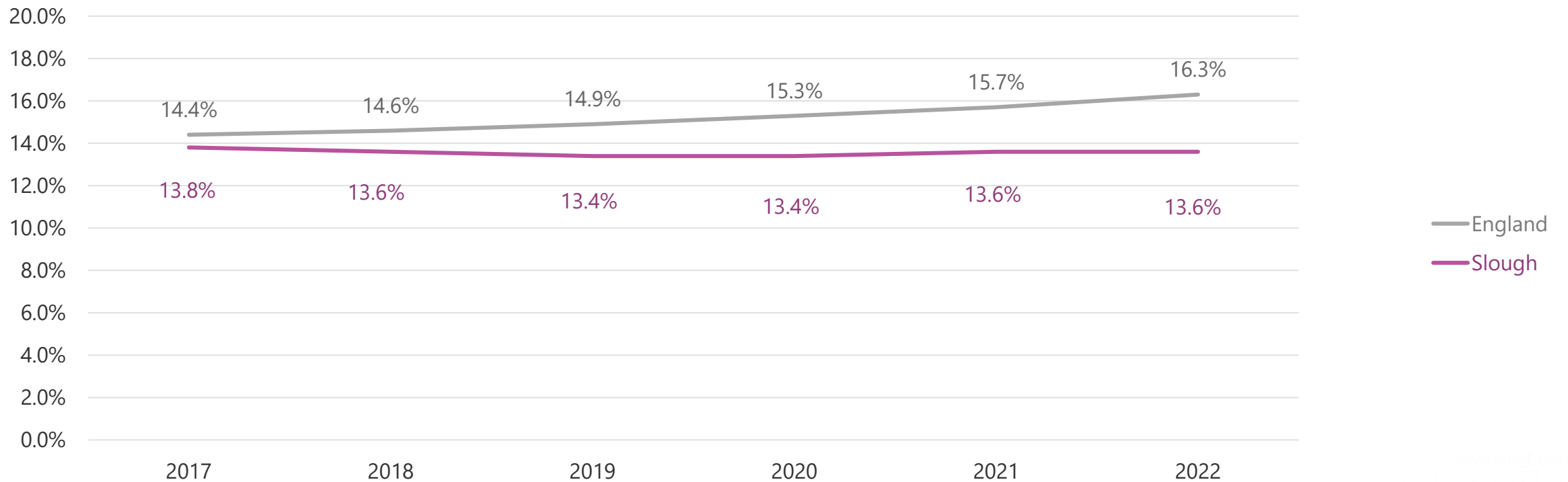
Highest Qualification: Number of Slough Residents (Aged 16 or Over)	2021	2011
No qualifications	23,966	21,434
Level 1 and entry	12,764	15,673
Level 2	14,336	14,256
Apprenticeship	5,004	2,371
Level 3	16,181	10,790
Level 4 and above	41,423	27,560
Other	5,260	14,561



Education - SEND

4,587 (13.6%) of children in Slough schools have a Special Educational Need or Disability. This proportion has remained consistent since 2017 and is below the national average.

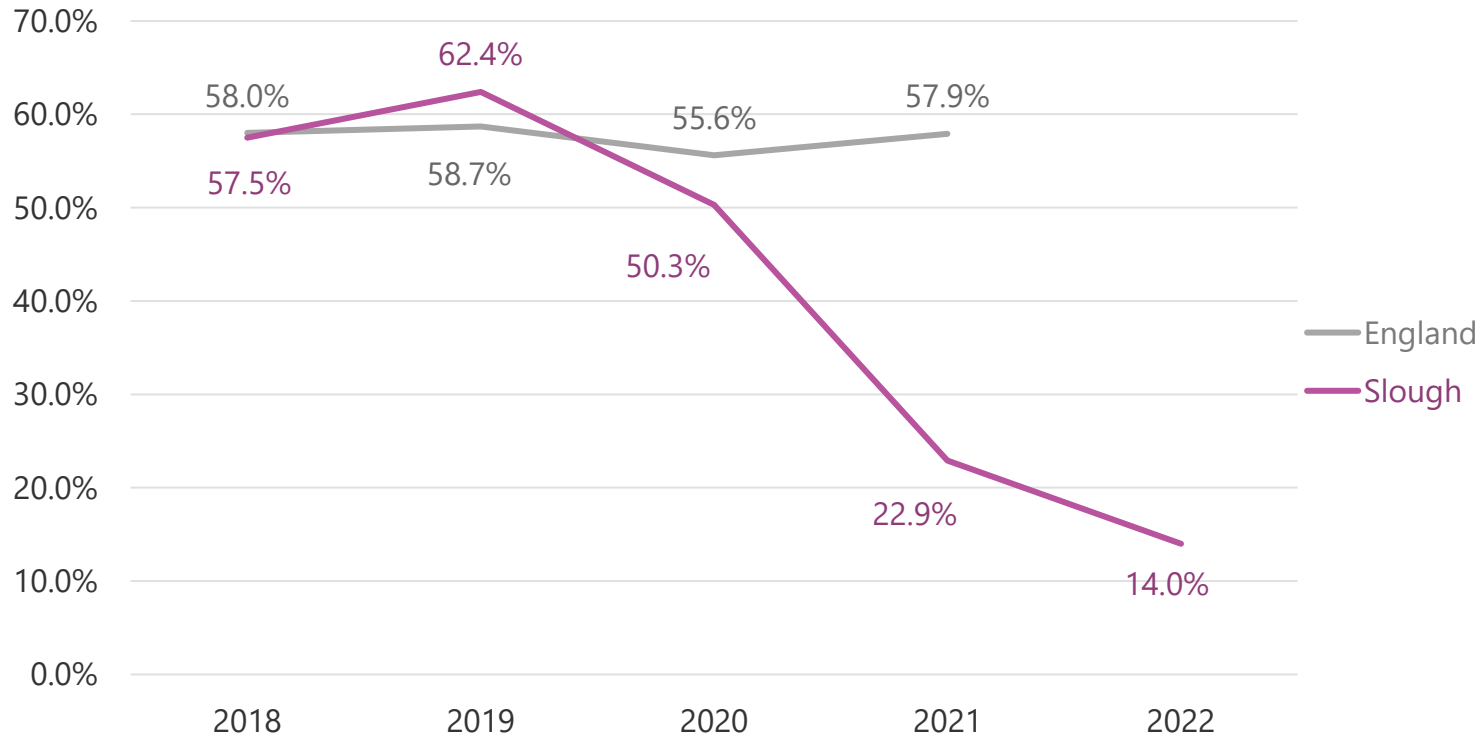
Percentage of pupils with SEND: all Slough schools





Education – EHC plans

Percentage of new EHC plans issued within 20 weeks



Slough has fallen significantly below the national average for the proportion of EHC plans that are completed within the statutory 20 week timescale.

Of the children with an EHC Plan, the most prevalent primary needs are:

- 35.5% are Autistic
- 17.3% have Speech, Language, and Communication challenges
- 7.7% have Social, Emotional, and Mental Health challenges
- 6.8% have Moderate Learning Difficulties



Education – SEN support & EHC plan attainment

Area	Measure (2021/22)	Slough	SE	England
EYFS	% of pupils w. SEN support : good level of development	20.2%	24.4%	22.9%
EYFS	% of pupils w. EHC plan : good level of development	0.0%	4.4%	3.6%
KS2	% of pupils w. SEN support : expected standard - Reading, Writing, Maths	21.0%	20.0%	21.0%
KS2	% of pupils w. EHC plan : expected standard - Reading, Writing, Maths	10.0%	8.0%	7.0%
KS4	& of pupils w. SEN support : Grade 5+ in English & Maths GCSE	24.1%	22.9%	22.4%
KS4	& of pupils w. EHC plan : Grade 5+ in English & Maths GCSE	12.3%	7.4%	6.9%
NEET	% of 16-17 year olds w. SEN support not participating in education, employment or training	10.3%	9.0%	8.4%
NEET	% of 16-17 year olds w. EHC plan not participating in education, employment or training	9.3%	7.7%	8.6%
Level 3	% of 19 year olds w. SEN support qualified to lv.3	41.3%	35.3%	35.4%
Level 3	% of 19 year olds w. EHC plan qualified to lv.3	16.7%	14.1%	14.0%

Children with SEN in Slough:

- Have relatively lower readiness for school
- attain comparatively strong educational outcomes from Key Stage 1 to Key Stage 3
- have a mix of outcomes at Key Stage 4 and transition to adulthood, with lower levels of participation in Education, Employment, or Training
- Comparatively strong educational outcomes for 19 years olds qualified to level 2 and 3

Sources

Data in this pack:

- [2021 Census](#)
- [2011 Census](#)
- [2019 Indices of Deprivation](#)
- [ONS: People, population and community](#)
- [OHID: Fingertips Public Health Data](#)
- [NOMIS: Census & Labour Market](#)
- [Community Safety Partnership Recorded Crime](#)

Other useful sources:

- [Berkshire Observatory](#)
- [Berkshire East JSNA](#)
- [PHOF Wider Determinants of Health](#)
- [Local Insight](#) (login required – contact Strategic Insight Team)