

New Simplified Planning Zone

2024 - 2034

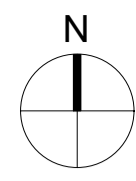
Plans

Plan 1: SPZ Scheme Boundary Plan


Reference: SPZ-P01

For consultation July 2024

Note: If you need this information in an accessible format please
contact planningpolicy@slough.gov.uk



0 100m 200m
1:3250

 New SPZ Scheme Boundary

